

# Festival Guide



Singapore  
Festival of Arts 1992

DANCE

1992

Drama

MUSIC

VISUAL THEATRE



The Art of Fine Cognac.



Martell Cordon Bleu. The Art of Cognac Since 1715.

# At Capitol Optical, we don't just sell eye-wear



Thorough eye examination



The perfect fit



Unlimited choice and selection



Contact Lens guidance and instruction



Our satisfied customers

At Capitol Optical, eye-care of our customers is foremost. And the starting point of your eye-care is our professional and personalised service. Ranging from thorough eye examination; helping you select the right eye-wear; adjusting the frame to fit; proper guidance in contact lenses and cleaning of your eye-wear. These are the visible evidence of our service resulting in satisfied customers.

Apart from the professional aspects, Capitol Optical makes your visit to the optician fun. We have the widest selection of eye-wear which can create a new look for you every time. Capitol Optical – where service and the little things count a lot ... because we don't just sell eye-wear.



THE CAPITOL FAMILY – Part of our friendly and professional sales team.



Capitol Optical  
CO. PTE. LTD.

211 Henderson Road #05-03 Singapore 0315 Tel: 2701303 Fax: 2704874

• Chinatown Point • Far East Plaza • Forum Galleria • Lucky Plaza • Raffles City • Tanglin Shopping Centre • Wisma Atria



## "ALL THE WORLD'S OUR STAGE..."



... and our latest supporting role is one we're honoured indeed to play. As a major sponsor of the Singapore Festival of Arts 1992, it's our pleasure to fly in the theatrical companies, musical groups and dance troupes from a dozen countries around the globe. Then, after the last curtain falls, to fly them all back to their different homes. That's show business". **SINGAPORE AIRLINES**

The Singapore Festival of Arts 1992 is the first festival organised by the National Arts Council.

One important aspect of the Festival of Arts is its role in generating local works as well as showcasing the best of our local talent: local professional groups such as Theatreworks, the Singapore Symphony Orchestra, the Singapore Dance Theatre and Practice Performing Arts Centre Ltd, have been invited to participate.

Singapore's first and only opera company, Lyric theatre, formed only last year, will make its appearance in the Festival for the first time with the production of Franz Lehar's 'The Merry Widow'. Other local amateur groups will offer Malay and Chinese drama, Indian dance, etc. in the Festival to whet the cultural appetites of Singaporeans.

Besides local programmes, the Festival offers to Singaporeans a repertoire of cultural programmes from all

over the world. This year's Festival features more non-conventional, more innovative and avant garde works, like the Multi-media Theatre by the Lindsay Kemp Company from the United Kingdom and the dancers-illusionists Momix from the USA. The renowned Ninagawa Company brings



MESSAGE FROM CHAIRMAN  
Professor Tommy Koh  
NATIONAL ARTS COUNCIL

to Singapore their productions of 'Macbeth' and 'Medea', which received critical acclaim at the 1987 Edinburgh Festival. Another festival highlight features Singapore-born pianist, Margaret Leng Tan, who has established herself as an avant garde musician in New York. These are but a few of the exciting programmes of international

standard that we have lined up for you.

This year, we are featuring Indonesia's Bagong Kussudiardja Dance Theatre. The dance company, headed by Indonesia's acclaimed choreographer, Bagong, will stage works that combine traditional and contemporary elements.

In all, there will be 37 productions, giving a total of 126 performances over the month of June.

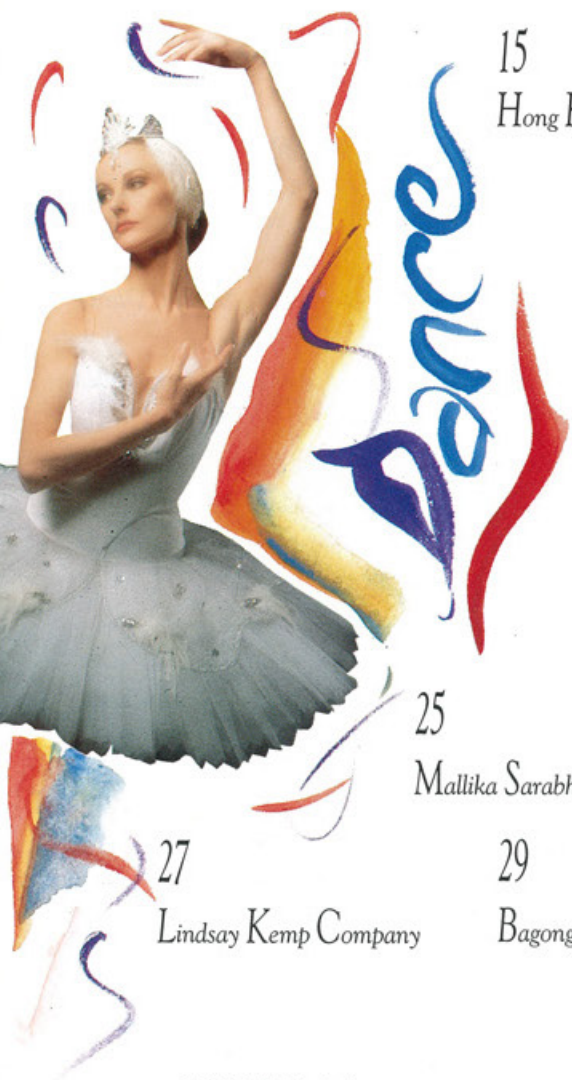
In addition, there is an extensive Festival Fringe programme, running concurrently with the main Festival programme. This also promises to be different, exciting and enjoyable. The Fringe is the outreach arm of the Festival.

I would like to thank our sponsors, donors and all volunteers, whose generous support in money and kind have helped to make this Festival a reality.

I have great pleasure in welcoming you to the Festival, and trust that you will find its programmes challenging, stimulating and entertaining.

FOUR DECADES EXHIBITION  
Singapore International Festival of Arts 2018





15  
Hong Kong Ballet And Singapore Dance Theatre

17  
London City Ballet

19  
Momix

21  
Ballet Folklorico de Mexico

23  
Paco Peña's Flamenco Dance Company

25  
Mallika Sarabhai And Dancers

27  
Lindsay Kemp Company

29  
Bagong K. Dance Theatre

31  
Combined Indian Dance

## GENERAL

- 3  
Chairman's Message
- 51  
Fringe 92
- 54  
Ticket Booking Information
- 56  
Calendar Of Events
- 61  
Seating Plans
- 65  
Postal Booking Form
- 78  
Festival Restaurants



35  
Lyric Theatre

37  
Dallas Symphony Orchestra

39  
The Polish Nightingales

41  
Ladysmith Black Mambazo

43  
Los Angeles Guitar Quartet

45  
PA Chinese Orchestra

47  
Singapore Symphony Orchestra

49  
Margaret Leng Tan

69  
The Wallace Collection

71  
Paco Peña Flamenco Guitar

73  
New Music Forum

75  
Gamelan

77  
200 Voices

## CONTENTS

81  
Shanghai Theatre Academy

83  
Theatreworks

85  
Ninagawa Company

87  
Practice Theatre Ensemble

88  
Sibikwa Players (So Where To?)

89  
Sibikwa Players (D.E.T. Boys High)

91  
Singapore Federation Of Chinese Drama Associations

93  
Gunong Sayang Association

95  
Majlis Pusat And Singapore Malay Drama Groups

97  
Pan Asian Repertory Theatre

101  
Theatre Sans Fil

103  
Theatre Fantastique

105  
Quanzhou Puppet Troupe

107  
Omer Veilleux

108  
Hi! Theatre



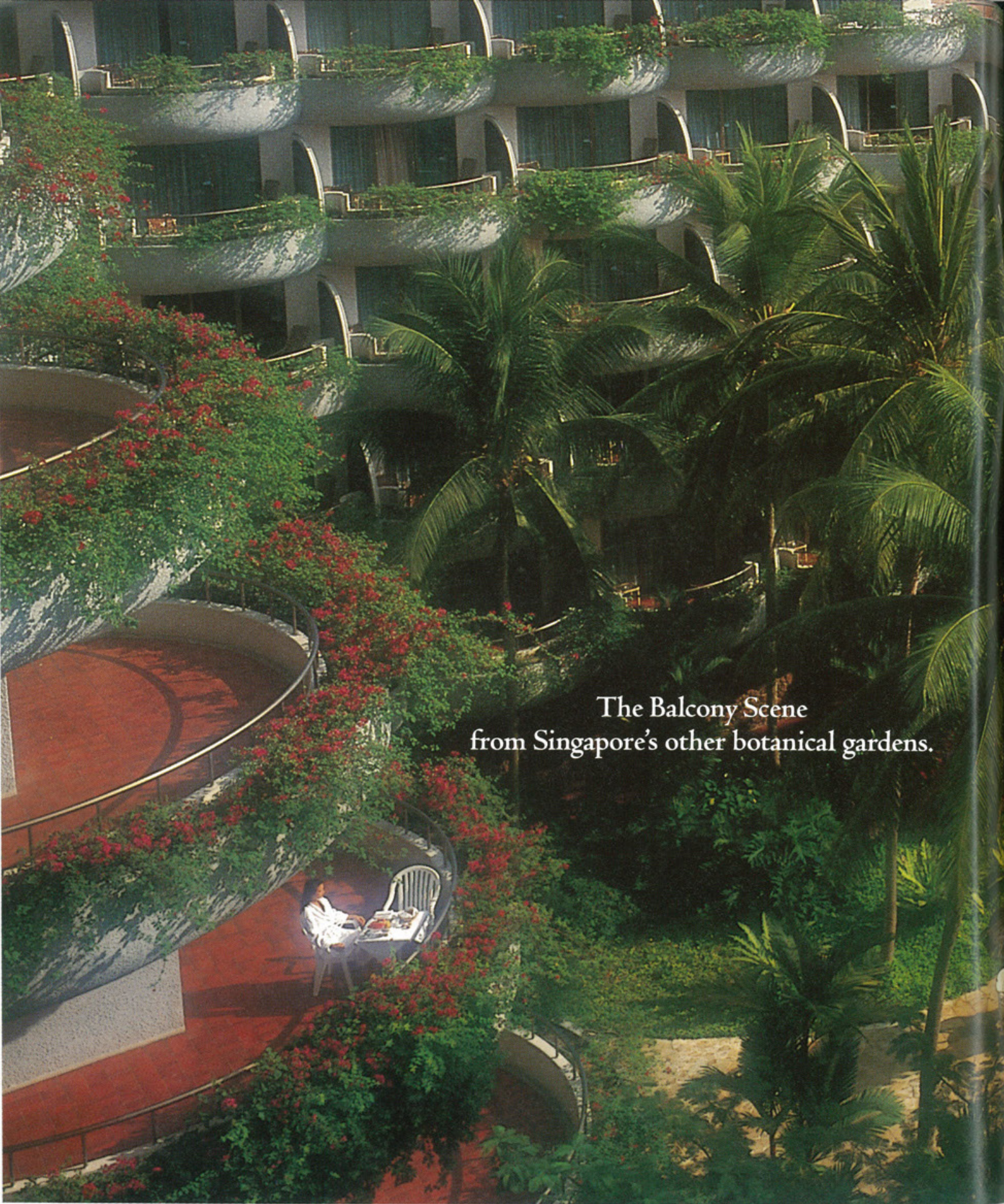
110  
Asean Artists

111  
Asean Photographers



FOUR DECADES EXHIBITION  
Singapore International Festival of Arts 2018





The Balcony Scene  
from Singapore's other botanical gardens.

Where else but the Shangri-La.

  
**Shangri-La hotel**  
SINGAPORE

A SHANGRI-LA INTERNATIONAL HOTEL

Just behind glittering Orchard Road and set amidst some 15 acres of lush tropical greenery, stands the Shangri-La... Singapore's paramount address for the business traveller. For reservations, please call 7373644. Fax: 733 7220 / 733 1029.

# Culture and Arts Continue to Attract Overseas Visitors to Singapore

Singapore represents an historical crossroads between East and West. In this city of contrasts, entertainment comes in many forms, ranging from traditional performances to contemporary shows.

The biennial Festival of Arts programme enlivens Singapore's cultural calendar and continues to be a major attraction for the city's overseas visitors.

"A major aim of the Festival of Arts is to promote a stronger appreciation of the arts among local audiences," said Mr Leong Chee Whye, Chairman of the Singapore Tourist Promotion Board.

"The Festival also allows us to share with our visitors the wealth of local talent and entertainment which our city offers," said Mr Leong.

The Festival of Arts is a month-long celebration which showcases the performances and contributions of artistes from Singapore, the



Chinese cultural performers.

ASEAN region and the world. There are also numerous

fringe activities featuring art, craft, drama, dance and music.

"The fringe activities are more informal and family-oriented performances and attract large numbers of spectators," said Mr Leong. "The



Tests of faith and fire-walking are common during the "Thimithi" festival.

performances are often held in settings such as MRT train stations, parks, shopping malls and promenades, bringing the festival to many more people."

Many of the activities showcased in the festival are available to Singaporeans and visitors throughout the year. "Wayangs" or Chinese operas, performances by the Singapore Symphony Orchestra, theatre productions, ➤ 9



International dance troupes perform in the Lion City.

FOUR DECADES EXHIBITION  
Singapore International Festival of Arts 2018



# EXPRESSIONS OF YOU



## THE SPORTY YOU

Whenever the moment, whatever the mood, summon the spirit with Seiko.

**SEIKO**  
EXPRESSIONS  
OF YOU

Sole Distributor & Service Centre: THONG SIA CO (S) PTE LTD 30 Bideford Road #04-00 Thongsia Bldg, Singapore 0922. Tel: 737-6122.  
THONG SIA SDN BHD Level 1, Shahzan Prudential Tower, 30 Jalan Sultan Ismail, 50250 Kuala Lumpur. Tel: 03-2415163; 45 Jalan Tuanku Abdul Rahman, 50100 Kuala Lumpur.  
Tel: 03-2930418/03-2930419; AG 33 & A214, 2nd Floor, Wisma Merdeka, 88000 Kota Kinabalu, Sabah. Tel: 088-238320/088-238329.

INSIST ON SEIKO'S INTERNATIONAL GUARANTEE CERTIFICATE

◀9 ballet performances and live shows

can all be enjoyed at various venues

such as the Drama Centre and the



Graceful Malay performers.

Victoria Theatre, and provide the sett-

ing for a vibrant year-round arts scene.

Singaporeans also celebrate var-

ious religious and cultural festivals

involving offerings to "hungry ghosts",

processions of floats and performing

artistes, traditional wedding ceremonies,

tests of courage and faith, fire-walking,

mooncakes and brightly

lit lanterns.

This multi-cultural

heritage gives the city's arts

festivals a distinctly Singaporean flavour.

In June 1992 Singapore comes alive

again with an extensive Festival of

Arts programme, including performances

by both leading international and local

artistes, and an interesting range

of fringe activities.

Come and join in the fun of the

Festival.



Malay, Chinese and Indian dancers perform together.



The Singapore Symphony Orchestra.



Beautifully costumed Indian dancers.



Mooncakes are traditional fare during the Mooncake Festival.



Children celebrate the "Lantern Festival".



Bold Make-up is a feature of traditional "qiyang" of Chinese operas.



ALL FEELS

RAFFLES CITY  
THE ARTS

Festival Tickets Available At Service Desk, Raffles City Shopping Centre

Home to the stars of  
the Singapore Festival of Arts.

# Going East. Staying Westin.

Breathtaking by day,  
electrifying by night. The view from  
The Westin Stamford, Singapore,  
the world's tallest hotel.

THE WESTIN STAMFORD  
Singapore

The Westin Stamford and The Westin Plaza,  
2, Stamford Road, Singapore 0617.  
Telephone: (65) 338 8585 Fax: (65) 338 2862  
Telex: RS 22206 RCHTSL





MAJOR SPONSORS

Singapore Airlines

Singapore Tourist Promotion Board

Raffles City And The Westin Stamford  
& The Westin Plaza

Inchcape Berhad

Singapore Broadcasting  
Corporation

DBS Bank

Overseas Movie Pte Ltd

Scotts Group of Companies

American Business Council

Far East Organization Centre

Hotel Properties Ltd

Kuo International

Singapore Totalisator Board

Hong Leong Foundation

Mobil Oil Singapore

Port Of Singapore Authority

Standard Chartered Bank

Singapore Press Holdings

Wing Tai Holdings Ltd

The Keppel Group of Companies

Shell Companies In Singapore

The Shaw Foundation



Official Festival Airline



Official Festival Hotel



FOUR DECADES EXHIBITION  
Singapore International Festival of Arts 2018





# The last time we sponsored local playwrights, it resulted in tragedy.

The audience loved it. They were spellbound.

Some chuckled at times. But when death struck, even grown men were sniffing and dabbing at their eyes.

Such is tragedy.

Yet no more than 10 minutes after the shocking death of the heroine, the very people who had tried to hide their grief were now applauding.

They wanted more of the same. And thanks to Singapore Press Holdings, they'll get it.

Last year, we sponsored the Theatreworks Writers' Laboratory,

which gave 12 young local playwrights the opportunity to master the art of play writing and, indeed, to see their dreams fulfilled.

The Laboratory will, in due course, produce 12 plays — each with its unique message and style to pep the Singapore stage scene.

It's also Theatreworks' way of doing what it has always wanted to do — to share its passion for drama. Without it, fine talent would be robbed of much-needed exposure and honing; and all Singapore would be the poorer.

And *that* would be tragic.



# Hong Kong Ballet And Singapore Dance Theatre

KALLANG THEATRE  
2-3 JUNE



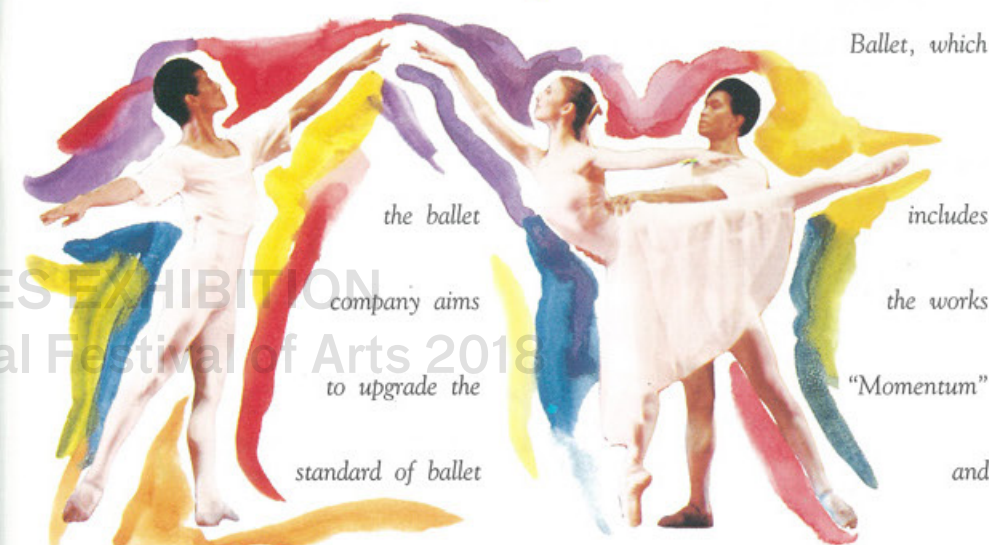
Singapore Dance Theatre is Singapore's first professional ballet company.

Formed in August 1987, under the artistic direction of Goh Soo Khim and Anthony Then, both highly acclaimed Singapore dancers and choreographers,

and provide an opportunity for local aspiring dancers to seek a professional career in dance.

For the Singapore Festival of Arts 92, the company will jointly stage a mixed bill with the Hong Kong

Ballet, which



the ballet company aims to upgrade the standard of ballet

includes the works "Momentum" and

"Unknown Territory" by the late Goh Choo San.

Since its inception in 1979, the Hong Kong Ballet has made rapid progress, and today it ranks as one of the foremost ballet companies in Asia. Its repertoire includes most of the major, full-length classical works in productions which have been acclaimed by critics and public alike.

This joint effort between two dance companies from Singapore and Hong Kong is the first in the history of the Festival.

Sponsored by:  
SINGAPORE PRESS HOLDINGS LTD







## appreciation complemented with commitment.

Inchcape Berhad perceives the Arts as part and parcel of the essence of quality living. Arts thrive on talents, appreciation and commitment.

Getting involved in the Festival of Arts again, we hope to encourage new talents to surface and get the recognition they deserve. Inchcape believes that corporate substance is defined not only through our success but the need to be associated with the continuing promotion of the Arts.

**Inchcape**  
BERHAD

# London City Ballet

KALLANG THEATRE  
27 - 30 JUNE

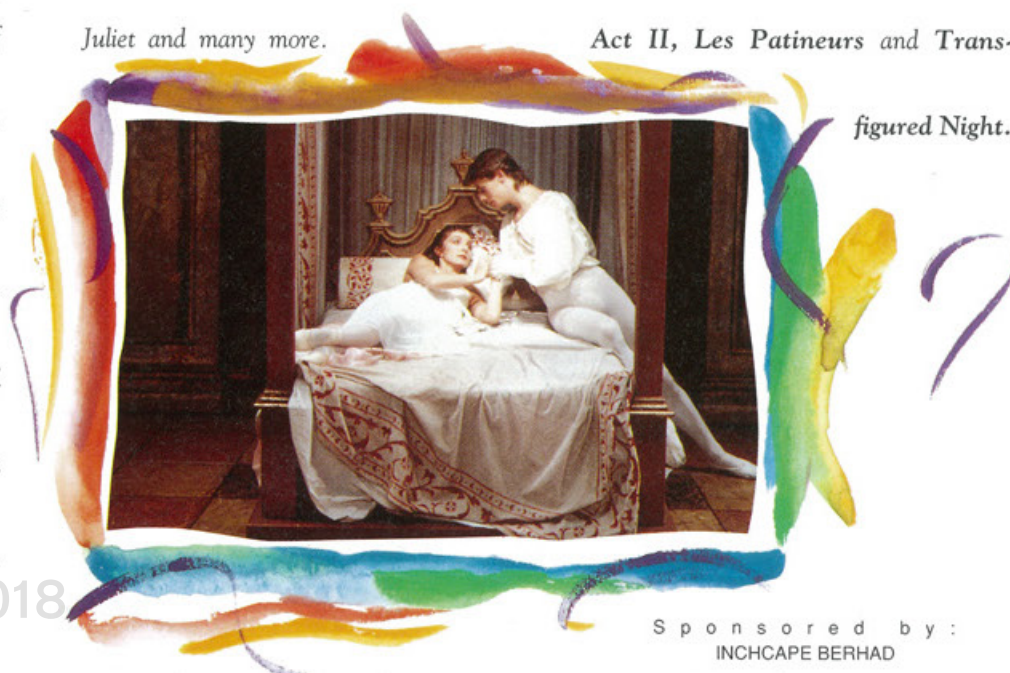


Since its inception in 1978, the London City Ballet, under the artistic directorship of Harold King has established itself as one of England's leading classical ballet companies.

Often known as the "Princess of Wales company" (who is its patron), its productions are marked by intricate choreography, lyrical and brilliant dancing and spectacle normally associated with larger companies. Currently in residence at the Sadler's Wells Theatre,

this highly successful ballet company has performed all over Britain and abroad to excellent reviews.

The London City Ballet has successfully adapted *La Traviata* into dance. Their impressive repertoire also includes other full-length classics like *La Sylphide*, *Cinderella*, *Romeo and Juliet* and many more.



This highly acclaimed ballet company brings to the Singapore Festival of Arts 92 the full-length production of Prokofiev's

*Romeo and Juliet*, choreographed by Ben Stevenson to the accompaniment of the Singapore Symphony Orchestra. The company will also present a mixed bill consisting of *Swan Lake* Act II, *Les Patineurs* and *Transfigured Night*.

FOUR DECADES EXHIBITION

Singapore International Festival of Arts 2018

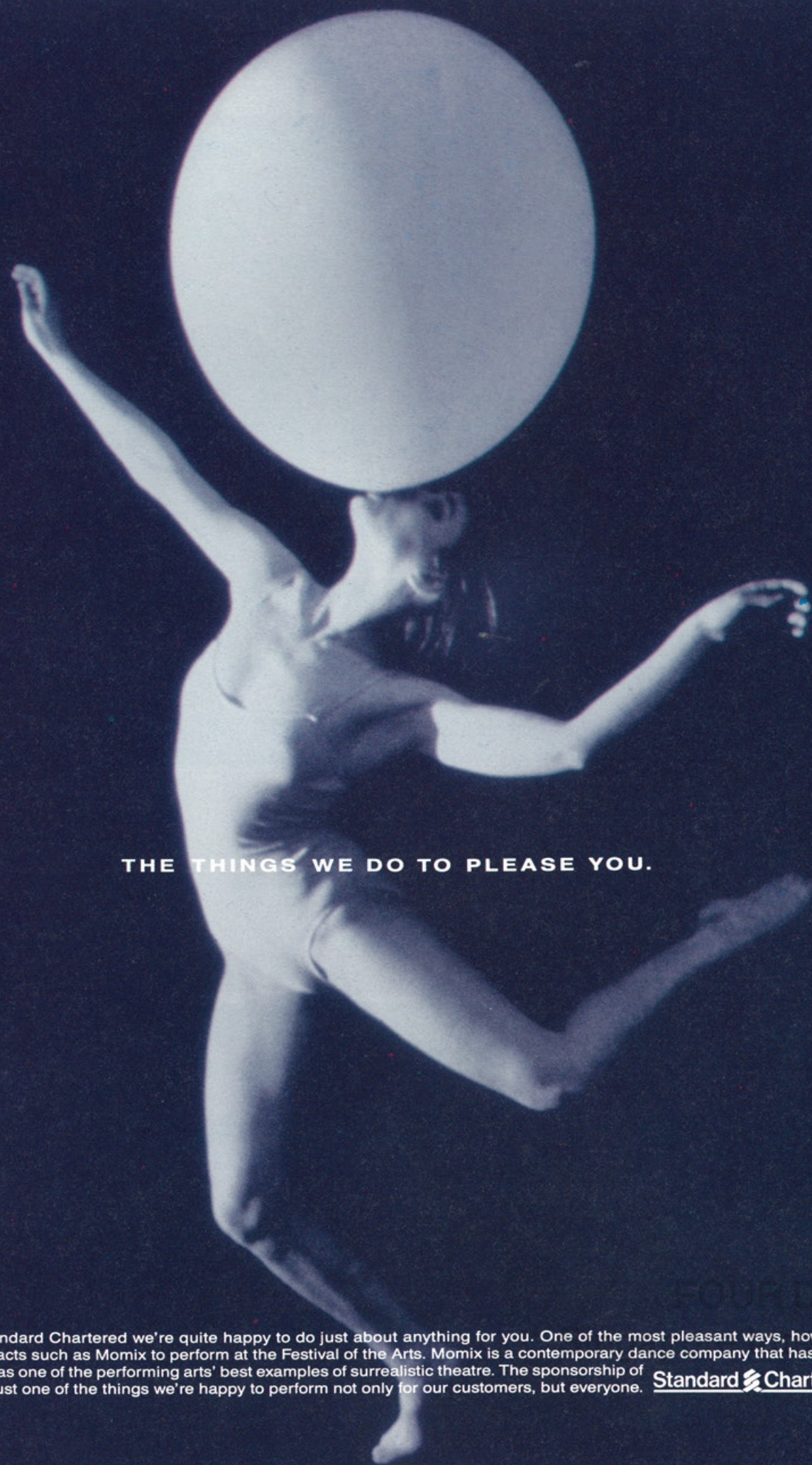
Season sponsor:  
BARCLAYS BANK LONDON



Sponsored by:  
INCHCAPE BERHAD

**Inchcape**





THE THINGS WE DO TO PLEASE YOU.

At Standard Chartered we're quite happy to do just about anything for you. One of the most pleasant ways, however, is helping acts such as Momix to perform at the Festival of the Arts. Momix is a contemporary dance company that has been described as one of the performing arts' best examples of surrealistic theatre. The sponsorship of Momix is just one of the things we're happy to perform not only for our customers, but everyone. **Standard Chartered**

# Momix

KALLANG THEATRE  
15 - 16 JUNE



Known internationally for presenting works of astonishing inventiveness and physical beauty, Momix is a company of dancer-illusionists under the direction of its founder, Moses Pendleton. For 10 years,

Momix has been representative of American avant-garde dance, with its

stunning visual effects and its celebra-

tion of the human body.

"Punning" in dance and refusing to be straightjacketed into conventional meanings are definitive of Momix. Even its name has been lifted from a most unartistic source - a food supplement for calves. In fact, it is this sometimes bizarre juxtaposition of the pedestrian and the esoteric which is distinctively Momix.



The audience can expect to be treated to vivid imagery wrought from the creative manipulation of light, costumes and simple props.

This, combined with the wizardry of the dancers and Pendleton's wacky sense of humour will promise to be an unforgettable performance.



FOURTH DECADES EXHIBITION  
Festival of Arts 2018

Sponsored by:  
STANDARD CHARTERED BANK

**Standard Chartered**



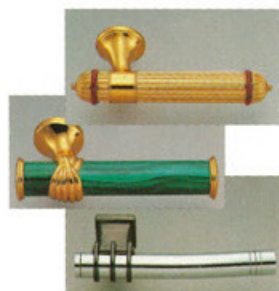


WING TAI ENTERPRISES PTE LTD

FULL RANGE OF TOP QUALITY BUILDING PRODUCTS FOR YOUR ONE-STOP SELECTION



Sanitaryware and fittings



Door handles



Modular kitchen systems



Faucets



Bathroom accessories



Natural wood flooring



Marble/granite



Porcelain homogeneous tiles



Glazed ceramic tiles



Shower enclosure



Carpet tiles



Crystallised glass panels

# Ballet Folklorico de Mexico

KALLANG THEATRE  
5-7 JUNE



as the Cultural  
Representative  
of Mexico to the

at the same time refining them through  
her choreographic guidance and loving  
study of the original forms.

world at large for her work

Ballet Folklorico de Mexico pro-

Folk art is traditionally defined  
as the repository of a culture's con-  
sciousness. Unchangeable in its essence,  
it is nevertheless beautified and refined  
through the eyes of new generations.

Mexican folkloric dance originated  
during the pre-Hispanic era where  
life revolved around religion and the  
military. The dance form also reflects  
this categorization in its almost  
obsessive uniformity of movement  
and precision of rhythm.

Ballet Folklorico de Mexico was  
founded in 1952 by dancer and choreo-



mises an evening of excellent choreo-  
graphy, heady swirling dancers and  
stunning costumes in the re-enactment  
of the dances evoking the adoration of  
Nature, Courage, Love and Death.

The Singapore Festival of Arts  
92 will be injected with a glorious  
burst of colour and adrenalin from the

Ballet Folk-  
lorico de Mexico.

in folkloric dance. She has maintained

the traditional integrity of these dances,

Sponsored by:  
WING TAI HOLDINGS LTD

WING TAI 永泰

FOUR DECADES EXHIBITION  
Singapore International Festival of Arts 2016





DBSBANK  
DBSBANK  
DBSBANK  
DBSBANK

4556 2112 3456 7891

VALID FROM 09/89 GOOD THRU 09/90 PV  
NICHAEEL CHAN MEMBER SINCE 1989

VISA

**Window to the arts.**

FOUR DECADES EXHIBITION  
Singapore International Festival of Arts

# Paco Peña's flamenco Dance Company

VICTORIA THEATRE  
11 - 13 JUNE

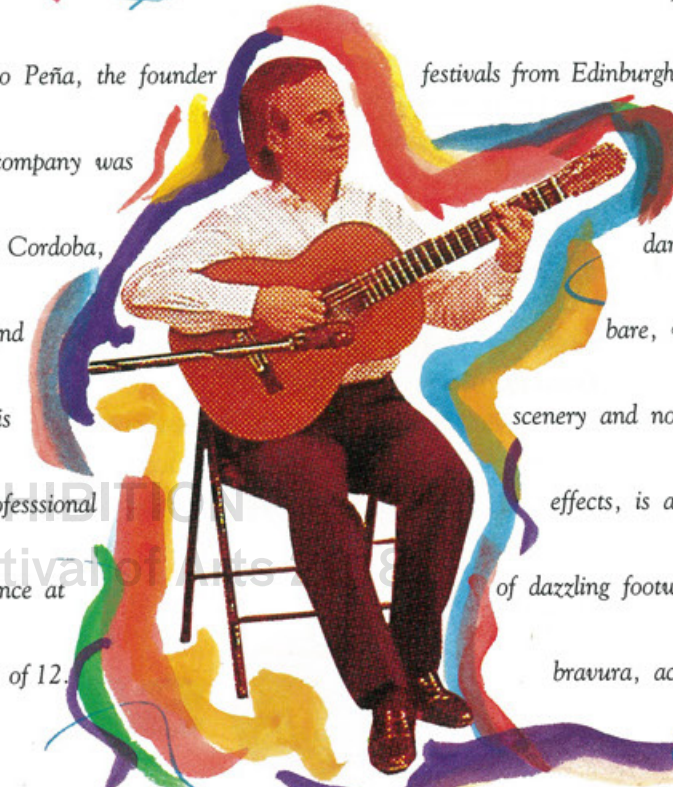


He has always been renowned as a gifted flamenco guitarist, but decided to widen his activities and in 1970, Paco Peña founded his famous flamenco company of dancers, guitarists and singers. The group was an immediate success and has since appeared in major festivals from Edinburgh to Hong Kong.

kaleidoscope of vivid impressions. Free-flowing and pulsating with raw, rhythmic energy, yet disciplined, Paco Peña's flamenco dancers are truly a feast for the eyes. Paco Peña will also be giving a guitar recital at the Festival.

Paco Peña, the founder of the company was born in Cordoba, Spain and made his first professional appearance at the age of 12.

The company's dance style, though bare, with no story or scenery and no fanciful lighting effects, is a giddy exhibition of dazzling footwork and thrilling bravura, accompanied by a



Sponsored by:  
DBS BANK  
DBSBANK





The new Saab 9000 CS Turbo.

Specifications may vary according to country

## Innovative motoring without compromise.

**A** lower and more wedge-shaped profile that spells greater aerodynamics.  
Re-styled grille and bumpers for a smarter look.  
An enhanced tail section with rear spoiler and stylish touches.

The new Saab 9000CS Turbo has smooth, neat lines that excite. Exceedingly.

Inside, a higher standard of comfort prevails.  
Spacious cabin. Leather upholstery. 4-speed automatic transmission. Cruise control. Ergonomic interiors. Quiet ride.

The Saab 9000CS Turbo now has a substantially reinforced structure. With major improvements in side collision protection.

Additionally, a proven ABS+3 continues to ensure your stopping is as good as your going.

And going green remains an important concern for

the Saab 9000CS Turbo. A 3-way catalytic converter with lambda sensor seeing to that.

Thrusting the Saab 9000CS Turbo into the forefront is an impressive turbocharged 2.3-litre engine. With 30% added power and increased torque to match.

The new Saab 9000CS Turbo. More distinction. More safety. More performance. And more driving pleasure.

More so, when you consider its applied aircraft technology and a distinguished aviation heritage. Likewise, a car as superb as the Saab 9000CS Turbo should rightfully deserve total customer care. Only from Trans Eurokars.

You'll also find our 2-year new car warranty and 6-year anti-body rust warranty a welcome inclusion.

Settle for nothing less. Test drive the new Saab 9000CS Turbo now.

**TRANS EUROKARS PTE LTD**  
23 Leng Kee Road, Singapore 0315 Tel: 251-6888 Fax: 4725674



**SAAB**

# Mallika Sarabhai & Dancers

WTC AUDITORIUM  
26 - 27 JUNE



She out-shone 400 dancers from

twenty-two countries to win the

coveted 'Golden Star' Award at the

15th International Dance Festival

at the Theatre de Champs Elysee in

Paris, in November 1977, and was

the first Asian and the youngest

dancer ever to be bestowed the

honour. Mallika Sarabhai is India's

most dynamic dancer today, and

excels beyond the dance stage into

theatre and film. Those who have

followed Peter Brook's adaptation

of the Mahabhrata on television will

remember her as the bewitching

wife of the Pandava brothers, Draupadi.

Mallika Sarabhai hails from an

artistic family. Her mother is

the famous Mrinalini Sarabhai,

also an internationally acclaimed

dancer. Mallika started

her dance

training at a

very young age in the dis-

ciplines of Bharata Natyam

and Kuchipudi.

After winning the

'Golden Star' Award

for best soloist, Mallika Sarabhai tra-

velled extensively all over the world

bringing the rigorous discipline of

Indian dance to traditional dance lovers.

Her brilliance has been described as

possessing "an imaginative splendour

that goes beyond mere technique".

Mallika is consistently bringing fresh

interpretations to traditional items

with verve,

vivacity and

imagination.

At the Singapore

Festival of Arts 92,

Mallika will offer two

programmes: Programme 1 -

Bharata Natyam and Kuchipudi

Programme 2 - excerpts

from dance drama with

five other dancers of her company.



FOUR DECADES EXHIBITION  
Singapore International Festival of Arts 2018



DON'T  
CRACK  
UNDER  
PRESSURE



TAG-Heuer watches; resistance, precision and endurance — qualities found in those who thrive on pressure. The 4000 quartz series with double protection screw-in crown is water-resistant to 200 meters. It features a unidirectional turning bezel, scratch-resistant sapphire crystal and end of life battery indication.



TAG-HEUER  
SWISS MADE SINCE 1860.

TAG-Heuer and Formula 1 World Champion Constructors McLaren International are part of the TAG Group.

Singapore  
McLAREN INTERNATIONAL

# Lindsay Kemp Company

KALLANG THEATRE  
23 - 24 JUNE

The Lindsay Kemp Company was founded by Lindsay Kemp, who was born in Liverpool in 1938 and who traces his lineage all the way back to Shakespeare's clown, Will Kemp. \*

With his eclectic style born out of fusing diverse elements from the various art forms — fringe drama, films, cabaret, musical chorus lines, Lindsay Kemp has forged a strong name for himself in the world of theatre. \*

His tour de force was "Flowers", inspired by the French novelist Jean Genet's homoerotic prison novel "Notre Dame des Fleurs". It was this which established his reputation and which has remained in his repertoire ever since.

Other noteworthy productions include "Salome", even more strange and exotic

than "Flowers", "Mr Punch's Pantomime — An Entertainment for Children Young and Old", not only reflected Kemp's desire not to confine himself to "adult" themes, but to celebrate his love for the lost traditions of English theatre.

In 1979, the company was commissioned by the Teatro Eliseo of Rome and

the Teatro Nazionale of Milan to mount a production of the well-loved Shakespearean classic, "A Midsummer Night's Dream". It won the first prize in the Belgrade festival (1981). Kemp's version broadly follows Shakespeare's

own, and the music is eclectic, ranging from Elvis Presley to Mendelssohn, supplemented by original music by



Carlos Miranda.

The settings are vivid, the costumes are extravagant and in some cases, non-existent. Kemp's "A Midsummer Night's

Dream" is definitely not for the prudish or the faint-hearted.

At this year's Singapore Festival of Arts 92, the Lindsay Kemp Company will be performing their interpretation of "A Midsummer Night's Dream".

EXHIBITION  
Singapore Festival of Arts 2018





# Many Talents Performing Together...

## Scotts Holdings Limited

- Palm Court Serviced Apartments
- The Ascott Executive Residences
- Festival Market — Telok Ayer
- Scotts Shopping Centre
- Scotts Workshop
- Mövenpick Restaurants

## Scotts Investments (Singapore) Pte Ltd, R. Jumabhoy & Sons (Private) Limited and Aliph Holdings (1990) Pte Ltd

- Apparel Concepts
- Connoisseurs
- Scotts Weitnauer Retailing
- Cost Plus Electronics Supermarket
- Time/system
- A&W Restaurants, Singapore
- A&W Restaurants, Thailand
- Pizza Express
- Transit Ads
- Videovan Entertainment Industries

FOUR DECADES EXHIBITION  
Singapore International Festival of Arts 2018

**SCOTTS**  
GROUP OF COMPANIES

# Bagong K. Dance Theatre

VICTORIA THEATRE  
24 - 25 JUNE



ahead with his desire for a more expressive non-conventional dance style.

Bagong revolutionizes Indonesian dance by fusing both the traditional and modern elements, and his

highly acclaimed provocative works have afforded him recognition equivalent

to being a "national treasure" in his

country. Bagong will be the representative ASEAN performing group

for the Singapore

Festival of Arts 92.

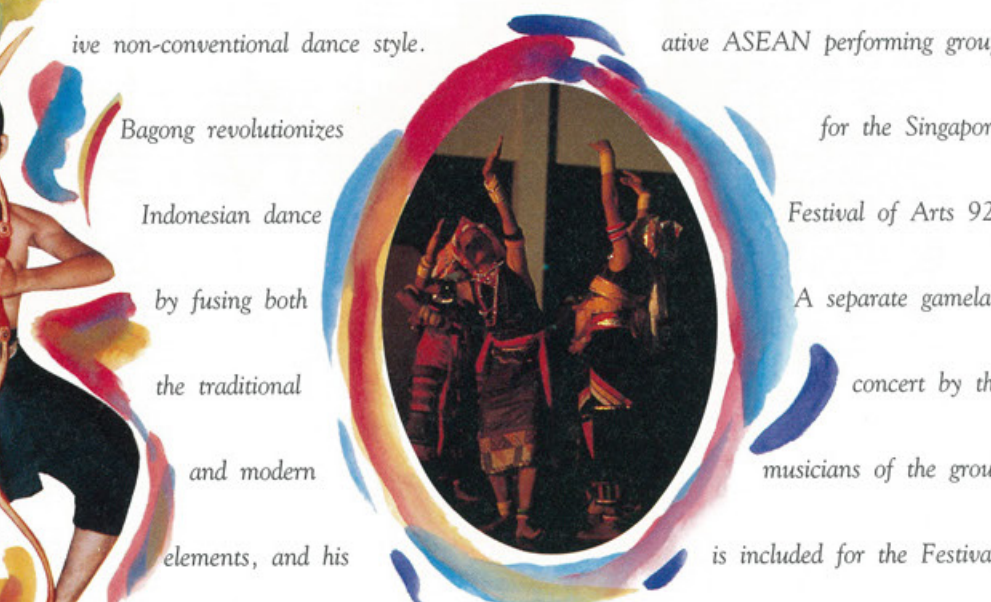
A separate gamelan concert by the musicians of the group

is included for the Festival.

Some 25 pieces of Bagong's paintings have also been specially brought

in for an exhibition at the Substation.

Bagong Kusdiardjo, a dancer trained in the Yogyakarta classical dance, is the founder of Indonesia's foremost modern dance company. As early as 1954, Bagong felt a need to express himself in means not available through traditional dance which was tied to conventions and fixed choreography. Although faced with reservations and obstacles, he decided to forge



Sponsored by:  
THE KEPPEL GROUP OF COMPANIES

**The Keppel**  
Group of Companies





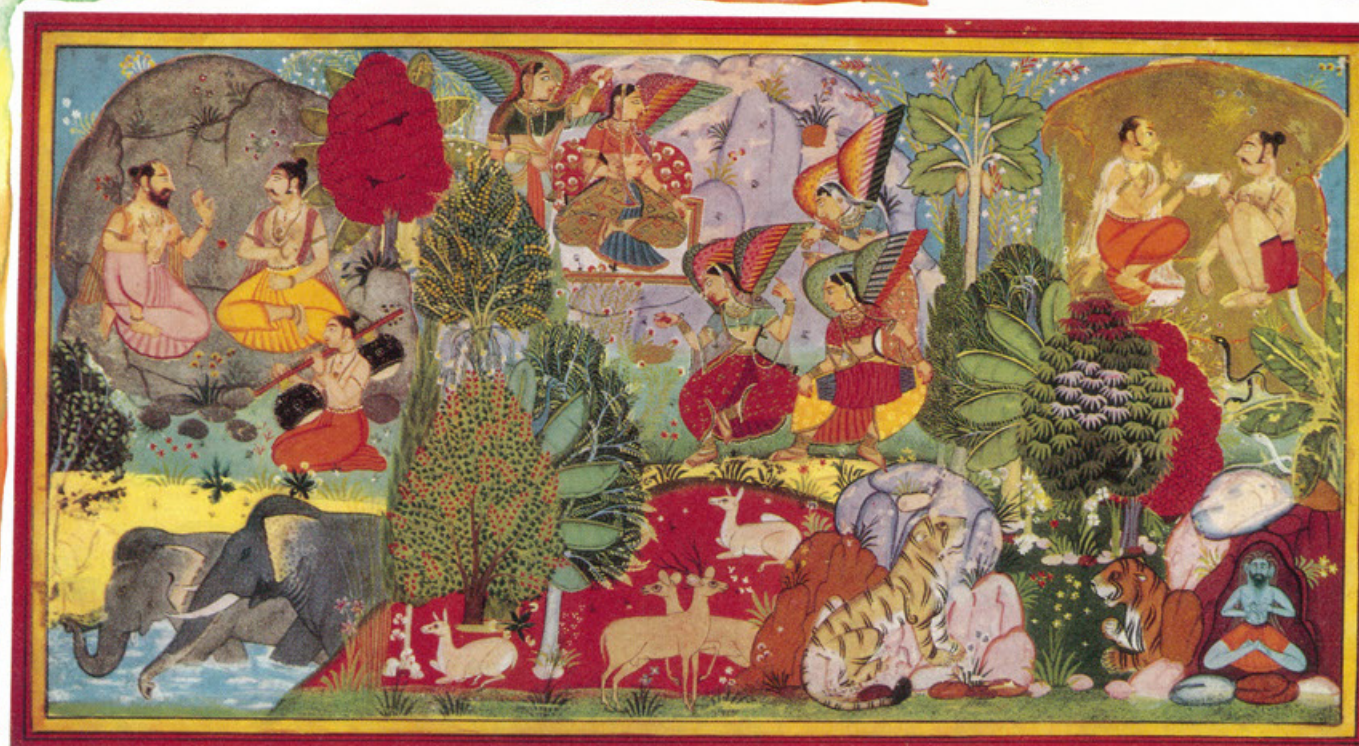
For the kind of gift  
that's rare, unusual and exclusive,  
you'll never have to go past



FOUR DECADES EXHIBITION  
Singapore International Festival of Arts 2018

# Combined Indian Dance

VICTORIA THEATRE  
8-9 JUNE



Three prominent Singapore Indian dance groups namely Apsaras, Singapore Indian Fine Arts Society and Nrityalaya Aesthetics Society will come together for an ambitious celebration in dance. The foremost exponent of Bharata Natyam today, musicologist and recipient of the prestigious Kalidas

Samman Award, Dr Padma Subrahmanyam, has been specially commissioned to compose the music for the dance drama programme, entitled A Tribute to the Seasons (Ritu Mahatmyam). Assisting Dr Subrahmanyam with the coaching of the local orchestra are two Indian musicians, B. Kannan

and R. Vijayan. The Orchestra will feature an unusual mix of multi-ethnic instruments drawn from traditional Chinese and Indian Orchestras as well as the Malay Gamelan. This joint effort will be coordinated by Neila Sathyalingam, a Cultural Medallion Winner in 1989.



In addition to the major sponsors on page 12, the Singapore Festival of Arts would like to record our appreciation for contributions by the following sponsors and supporters of the Festival 1992:

S P O N S O R S

C K Tang Ltd

Tithes Marketing (S) Pte Ltd

Marina Mandarin Hotel

The British Council

Cathay Pacific

Lee Kim Tah (Pte) Ltd

Australian High Commission

Alliance Francaise De Singapour

Singapore Hokkien Huay Kuan

Tung Ann District Guild

Singapore Chin Kang Huay Kuan

Eng Choon Hway Kuan

Singapore Hui Ann Association

Singapore Ann Kway Association

Lam Ann Association

Indian Bank

First Photo Suppliers

Sun Craft Fine Art Gallery

Eureka Advertising  
& Design Consultants Pte Ltd



FOUR DECADES EXHIBITION  
Singapore International Festival of Arts 2018



# This Year HONG LEONG FOUNDATION Is Playing A Supporting Role In Two Festival Of Arts Events.



**HONG LEONG FOUNDATION**

(Incorporated in the Republic of Singapore)

Registered Office: 16 Raffles Quay #26-00, Hong Leong Building, Singapore 0104. Tel: 2208411  
Secretary's Office: 16 Raffles Quay #18-04, Hong Leong Building, Singapore 0104. Tel: 2207377

FOUR DECADES EXHIBITION  
Singapore International Festival of Arts 2018

# Lyric Theatre

KALLANG THEATRE  
19 - 21 JUNE

Singapore's first and only profes-  
sional opera company's national debut

with the "Magic Flute" won good re-

views for their

brave and

innovative

attempt at

opera in

Singapore.

Lyric

Theatre

will offer

"The Merry

Widow", a highly popular operetta

by Franz Lehar to follow up on its

successful debut of "The Magic Flute",

which was praised for its original

Balinese-inspired costume designs.

The group's presentation of "The  
Merry Widow" for the Singapore

Festival of Arts 92 will feature five

foreign guest

opera artistes

including

opera singer

Marilyn Hill

Smith from

Britain. The

Singapore

Symphony

Orchestra

will accompany the Lyric Theatre

again on this occasion.



Sponsored by:  
HONG LEONG FOUNDATION





Naxos Singapore, a leading name in high quality classical music CDs, brings to you **Yellow River**, an exciting new label featuring the highly

# NAXOS SINGAPORE PRESENTS YELLOW RIVER

acclaimed People's Association Chinese Orchestra with their debut release "The Silk Road" And there's more. Other superb labels include **Marco Polo** and the now well-known **Naxos**. No other name brings you better.

## The Silk Road

### A Musical Journey

The People's Association Chinese Orchestra  
Ku Lap-man, Conductor



絲  
綢  
之  
路  
人民協會華樂團  
指揮：顧立民

"It goes without saying, of course, that cheap is not always good. So what do we get - a bargain or a bummer? The short answer is that, in almost every case, you get more than you pay for. Many of these performances are as good, if not better, than some full-price versions."  
(SCOTLAND ON SUNDAY)

"... worth it at twice the price"  
(CLASSIC CD)

"Anyone who has purchased one of these high-quality recordings will wonder why they are being asked elsewhere to pay 3 times as much for a very similar product."  
(CLASSICAL MUSIC)



"Superb performances in splendid digital sound, and even at thrice the price would offer an excellent value to the record buying public."  
(FANFARE)



"... Naxos is here to stay. Not only is it a unique product which by the sheer size and diversity of its catalogue fills a gap in the needs of every lover of classical music, but in performance value many of the items challenge and often surpass their top-selling, top-price rivals."  
(CD REVIEW)



Marketed by:  
Naxos (Singapore) Pte Ltd  
3 Irving Road, #03-04, Irving Industrial Building Singapore 1336.  
Tel: 288 8984, 288 7998, 288 0829 Fax: 288 9997

Call or write in NOW for a FREE catalogue in English or Chinese.

# Dallas Symphony Orchestra

VICTORIA CONCERT HALL  
3 - 5 JUNE

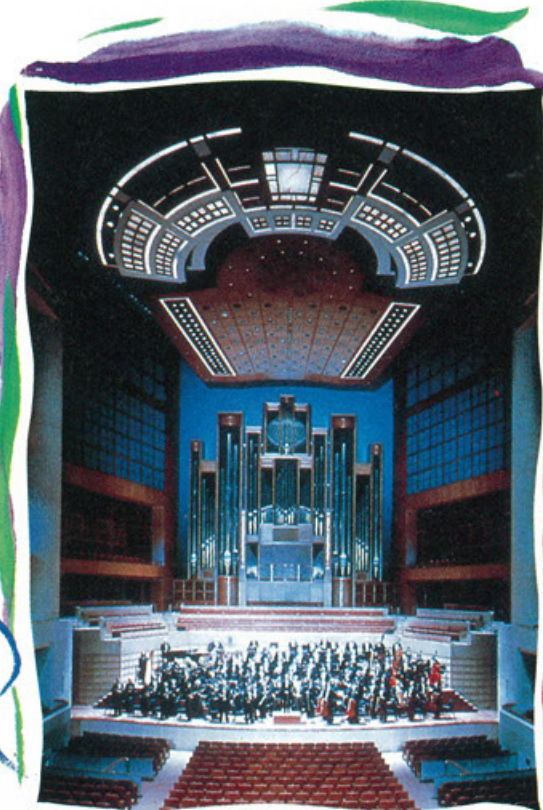
Eduardo Mata music director



The Dallas Symphony Orchestra was founded in 1900 as a 40-member ensemble known as the Dallas Symphony Club. The Orchestra is presently under the capable baton of Maestro Eduardo Mata, who has held the longest tenure as the Musical Director than any other with the Dallas Symphony. It is also under his direction that the Orchestra toured Europe, receiving resounding ovations and rave reviews. The

Dallas Symphony has been praised for its "vigour", "panache", "rounded unanimity" and "cultivated magnificence". Under Maestro Mata's tenure the orchestra has made 23 recordings with two of the albums

to enjoy Beethoven's Symphony No. 7, Copland's Symphony No 3, and Brahms' Symphony No 2. Singaporean violinist, Siow Lee Chin has been specially invited to perform as a soloist with the Orchestra for the Festival.



toured with other major international orchestras. Audiences will be able



Sponsored by:  
MOBIL OIL SINGAPORE





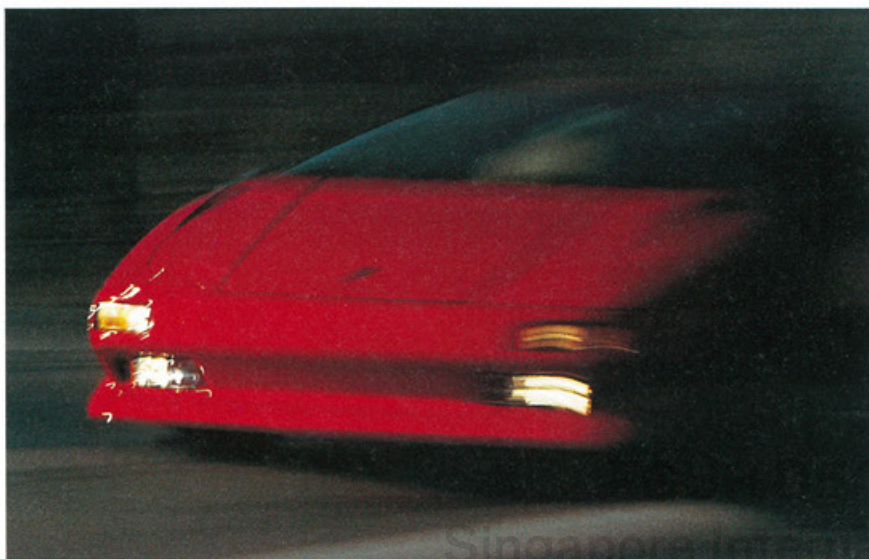
# Juba



5959 CD SHUTTLE • 7620 E RADIO/CASSETTE PLAYER • 3900 FE DAC UNIT  
• 3558 CLASS A POWER AMP • 6259 AND 6299 SPEAKERS

**UNLIKE ANY ORDINARY CAR AUDIO SYSTEM . . .**

**WE ASPIRE NOT TO BE IN JUST ANY CAR.**



**ALPINE**  
Car Audio Systems

Sole Agent:  
**WO KEE HONG (M) PTE. LTD.** 24, Leng Kee Road, Singapore 0315. Tel: 475 4555 (7 Lines). Fax: (65) 475 8623.

# The Polish Nightingales

VICTORIA CONCERT HALL  
15 - 17 JUNE



The Polish Nightingales (dubbed the ambassadors of Polish culture), was founded by Jerzy Kurczewski, a composer, and has established itself as one of the world's leading choral groups. During the 45 years it has been in existence, the Polish Nightingales has performed more than 3000 times and has travelled extensively to the European and North American continents.

They have also performed in the Vatican and at the White House.

The choir has distinguished itself from other choirs by its classical repertoire consisting of more than 700 compositions by 200 composers, representing the major periods in music history. With their grand volume, clarity and purity of voice enhanced by an almost total absence of vibrato and an insistence on pure tone, the Polish Nightingales are eminently suited to sing both Baroque and contemporary music.

The co-director of the Nightingales is Wojciech A. Krolopp, an accomplished conductor, who began as a singer in the choir itself. Under his direction, the choir has ventured into large-scale works for orchestra and chorus like JS Bach's "Mass in C Minor", Mozart's "Coronation Mass" and "Stabat Mater" by K. Szymanowski, among others.





# A

## STERLING CHOICE

We've polished up on a prime location inherited from the previous hotel.

We've applied a lot of imagination, investment and elbow grease to put a shine on our guest services and facilities. And we're transforming one of the best-placed properties on Singapore's Orchard Road into a sterling example of true value for money - the kind that both business and leisure travellers really appreciate.

Need we say more?



**ORCHARD PARADE HOTEL**  
SINGAPORE

1 TANGLIN ROAD, SINGAPORE 1024  
TEL: 7371133 FAX: 7330242 TLX: RS21488

# Ladysmith Black Mambazo

SINGAPORE CONFERENCE HALL  
23 - 25 JUNE



A South African acapella group, Ladysmith Black Mambazo (the Black Ax of Ladysmith, so-called because they come from the South African township of Ladysmith and also because they used to demolish their competitors at local singing competitions), catapulted to fame when they sang with Paul Simon on his 1987 Graceland album as well as on his hugely successful Grace-

land tour. They have also scored commercial success with their Shaka Zulu album which was produced by Paul Simon in 1988 as well as by singing in the Eddie Murphy film, "Coming to America".

Ladysmith Black Mambazo uses the traditional dance-based Zulu music, Isicathmiya (pronounced "Ith-scot-a-mia"), which means walking softly with

one's toes. Done completely unaccompanied, it is complex and hauntingly beautiful. Ladysmith Black Mambazo uses its distinctive vocal style and lyrics to scythe into a racially tormented South African society. Although the group's English and Zulu lyrics are not overtly political, the themes are easily identifiable with the volatile socio-political reality that is South Africa.

Being black in South Africa exacts a heavy price, but the leader of the group, Joseph Shabalala believes in his music, which touches all who hear it, "bridging the gap between cultures".





# IT'S A MAN'S WORLD

The Symbol of quality, style and elegance, Goldlion is committed to nothing but the highest standard. Leather goods, ties, shirts, accessories.... only Goldlion can give you such a variety that help you stand out whenever and wherever you are. Goldlion. For the man of today.



**Goldlion Boutique - Singapore:**  
133 New Bridge Road #01-08/12  
Chinatown Point Singapore 0105 Tel: 5342103

**Goldlion Boutique - Malaysia:**  
Lot No. T15 Third Floor Shopping Centre,  
Lot 10 Jalan Sultan Ismail / Jalan Bukit Bintang  
Kuala Lumpur Tel: 2442826

# Los Angeles Guitar Quartet

VICTORIA CONCERT HALL  
26 - 28 JUNE

The Los Angeles Guitar

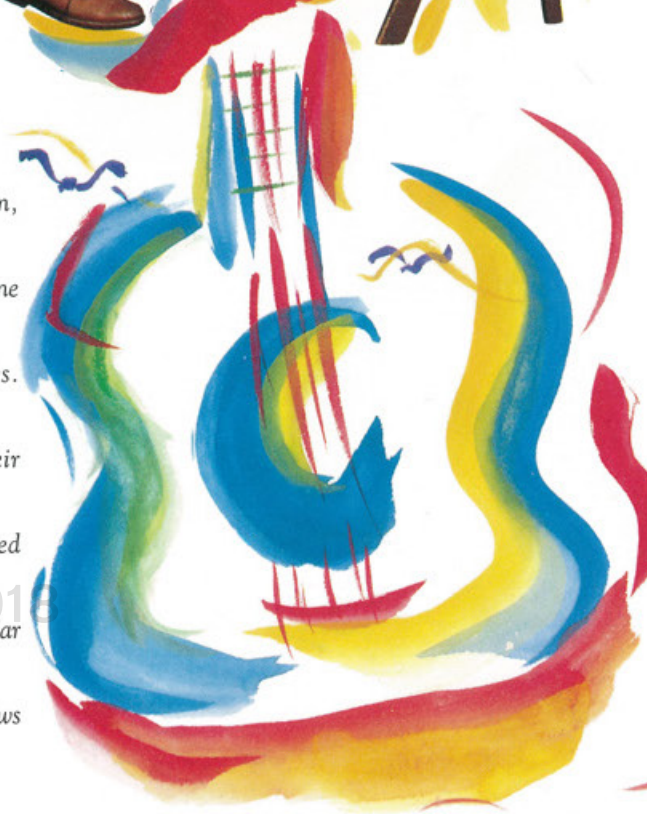
Quartet had its beginnings in the University of Southern California as the USC Guitar Quartet.

The quartet was founded in 1980 by Spanish virtuoso Pepe Romero. Their professional careers began after their return from a successful maiden concert tour of Mexico. In 1982, the quartet was signed up by a large Los Angeles entertainment management firm and the Los Angeles Guitar Quartet was born.

In the 12 years since its inception, the quartet has become recognised as one of America's leading guitar ensembles. Their fame has spread beyond their native country and they have toured extensively also in Europe and the Far East, consistently amassing rave reviews

from critics marvelling at the quality and range of sound available from a plucked instrument. Their style has been described as "possessing discipline and spontaneity balanced in perfection" (The Washington Post). They can be credited with enriching the guitar quartet repertoire through their transcriptions of classical works as well as their commissioning of new compositions. The first group of its kind to win a prize at the Concert Artists Guild International Competition, the quartet also appeared on the prestigious guitar series at New York's Lincoln Centre in March 1991.

Sponsored by:  
AMERICAN BUSINESS COUNCIL







**JEWELLERY INDUSTRIES SINGAPORE PTE. LTD.**  
 JIS Building 44 Alexandra Terrace (off Pasir Panjang Road) Singapore 0511  
 Tel: 4791188 (6 lines) □ Telex: RS 34305 JIS □ Fax: 4791533

# PA Chinese Orchestra

SINGAPORE CONFERENCE HALL  
 12 - 14 JUNE

Formed in 1968, the People's Association Chinese Orchestra is Singapore's leading Chinese music ensemble and has enthralled many with its outstanding performing standards and distinctive Singaporean character. The Orchestra is under the baton of Ku Lap Man and associate conductor, Phoon Yew Tien.

The Orchestra has toured extensively overseas and has performed at many international festivals like the Festival of Asian Arts in Hong Kong (1976), the Indian Ocean Music Festival in Australia (1984), the University Festival in Japan (1985), and also completed the Min-On Concert

Tour of Five Cities in Japan (1988).

In April 1991, an 11-piece PA Chinese Orchestra Ensemble performed at the Taipei Traditional Arts Festival.

For the Singapore Festival of Arts 92, the 40-strong Orchestra will perform three concerts featuring four virtuosos from the People's Republic of China - Yang Wei on the pipa, Yu Qiwei on gaohe, Wang Gao-lin on suona and Wang Hongyi on liuqing.



Sponsored by:  
 DBS BANK  
**DBSBANK**





LIFE'S PRECIOUS GIFTS.

  
SWAROVSKI  
SILVER CRYSTAL

SWAROVSKI SINGAPORE: 2 Alexandra Road #03-01 Delta House, Singapore 0315. Tel: 2730707.

Swarovski Silver Crystal available at: Atelier, Tel: 7360345 • Crystalodge Exquisite Gift Shop, Tel: 7337737, 7343257  
• Crystaltera Gift Centre, Tel: 3382434 • Damina Cristalleries, Tel: 3367092 • DFS Singapore, Tel: 2359700, 7344522  
• Genesis Crystals, Tel: 5324510 • Isetan, Tel: 7328866 • Robinson's, Tel: 7330888  
• Ruby Crystal & Listing (Batam), Tel: 011-778-322626 • Selangor Pewter, Tel: 3393115, 2356677, 3393958, 2356634, 7337777,  
7332351, 3341183 • Shaffi Gems, Tel: 3375443 • Sincar Pte Ltd, Tel: 2725985 • Tangs, Tel: 7375500  
• The Oriental Singapore, Tel: 3380066 • Versailles Enterprises, Tel: 3444900.

For information on joining the Swarovski Collectors Society, please call 2730707.

# Singapore Symphony Orchestra

VICTORIA CONCERT HALL  
12 - 13 JUNE

Since its inception in 1979, the Singapore Symphony Orchestra has been featured in every Singapore Festival of Arts. The formation of the 85-member Orchestra represented a significant milestone in the cultural development of Singapore.

The Orchestra has been active in the promotion of music appreciation and assumes a multi-purpose role in bringing music to the people.

To achieve that mission, the Orchestra has given several free open-air performances and visited schools in small ensembles. The Orchestra has also given concerts featuring the works of great Western composers. Also included in



pore Festival of Arts 92, the Singapore Symphony Orchestra will, for the first time perform in Singapore, Stravinsky's *Rite of Spring*. Accomplished Singaporean pianist, Koh Joo Ann is invited to return to

their impressive repertoire are the works of Singaporean and other Asian composers.

Singapore to perform as a soloist with the Orchestra under the 'Homecoming Series'.

For its contribution to the Singa-





# THE WORLD OF MUSIC AWAITS YOU!



Music Plaza is a full-line music store, marketing and retailing a complete range of musical instruments and software. These include acoustic pianos, disklaviers, electone organs, digital pianos, portable keyboards, synthesizers, acoustic and electric guitars, violins, brass & woodwind instruments, drum sets, music books, computer music software etc.

This is complemented by audio-visual products like amplifiers, speakers, DSP systems, video-disc players, home theatre systems, professional audio equipment etc.

The best in brand names include Yamaha, Baldwin, Dynasty, Akai, Gemeinhardt, Buffet, Boosey & Hawkes, Fox, Besson, Asturias, Manuel Rodriguez, Suzuki, Karl Stingl, Warwick, Remo, Hughes &

Kettner, Trace Elliot, Sabian, Laney, Adams, Fernandes, Pro-Mark, Energy etc.

We have a full-scale Technical Centre with well-qualified and trained staff to serve you better! Reliable after-sales service has given our products the highest resale value!

So, come and see us!

ASIA'S BEST  
**MUSIC**  
SUPERSTORE

**MUSIC PLAZA**

a subsidiary of Yamaha Music (Asia) Pte Ltd

ORCHARD  
68 Orchard Road #07-03 to  
#07-05 PLAZA SINGAPURA,  
Singapore 0923.  
Tel: 336 3311

THOMSON  
301 Upper Thomson Road  
#03-24 THOMSON PLAZA,  
Singapore 2057.  
Tel: 740 9330



# Margaret Leng Tan

TONQUES OF FIRE  
DBS AUDITORIUM  
6-7 JUNE



*piano,  
assisted by  
Stephen Montague,  
sound diffusion*

including

works created

specially for her - Christopher

Hopkins' ARCHED INTERIORS,

John Cages's famous 4'33" (SILENCE),

To the uninitiated, the idea of sticking anything alien in the piano like spoons, bolts, nuts and clothes spins, is to commit a major faux pas, yet, this is exactly what Margaret Leng Tan does to the piano.

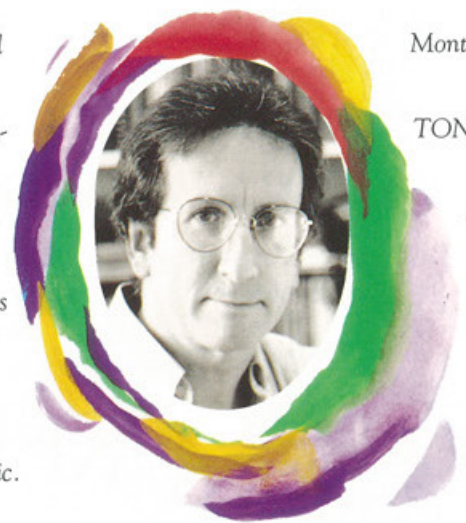
Margaret Leng Tan is the most celebrated virtuoso of prepared piano today. Hailed as the "world's premiere string piano virtuoso", her radically individual performance style fuses sound, choreography and drama. Avant

adopted her as his muse, and writes songs for her. Music critics have described her performances as extraordinary and spellbinding and this Singapore-born, Juilliard trained and New York-based pianist has added several successful albums to her name in this particular genre of music.

Margaret Leng Tan's unique artistry is seen and heard in "Tongues of Fire", an original music theatre event

the colossal massed sonorities of Somei Satoh's LITANIA, Ge Gan-ru's distinctively Chinese GU YUE (Ancient Music) and Stephen Montague's mesmerising TONGUES OF FIRE, a theatre work for piano, electronics, stones and dramatic lighting.

Margaret Leng Tan is specially brought back to Singapore under the 'Homecoming Series' of the Festival.



1990s EXHIBITION  
Singapore International Festival of Arts 2018





## Amongst The Material Benefits You Can Enjoy In Singapore... Are The Most Exclusive Fabrics!

The most select pure silks, chiffons, laces, linens, cotton voiles, organzas, embroidered fabrics, shirtings, suitings and other fabrics of Haute Couture. Tailoring is available, if desired.

**KHEMCOS**  
*European*

The ultimate in High Fashion fabrics.

68 Orchard Road #02-27, Plaza Singapura, Singapore 0923. Tel: 3375010  
252 North Bridge Road #02-27, Raffles City Shopping Centre, Singapore 0617. Tel: 3392951

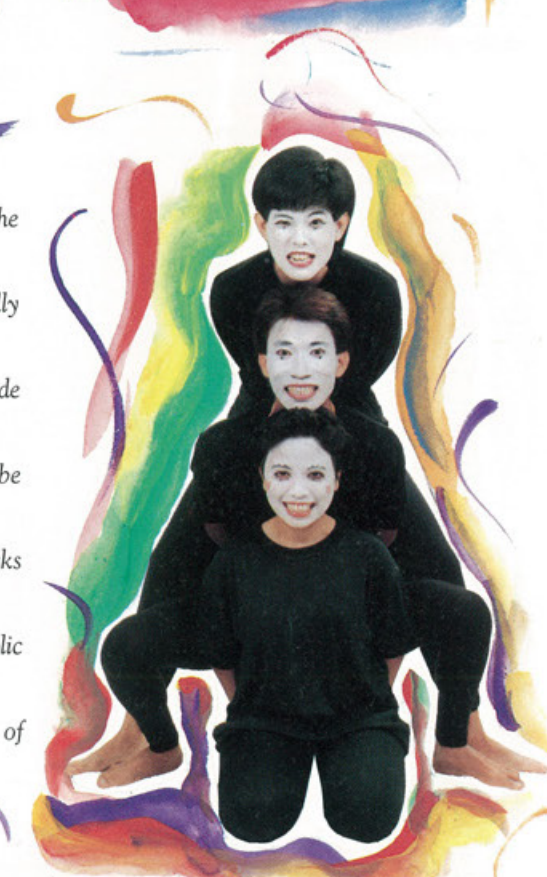
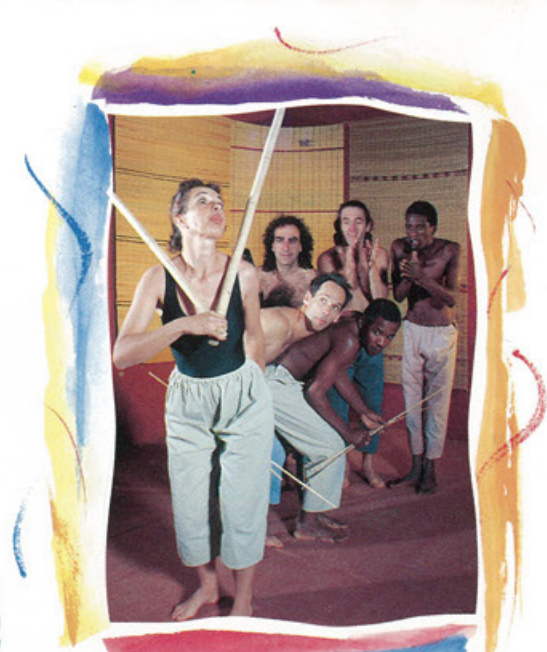
# Fringe 92

FRINGE 92 promises three weeks of excitement from 31 May 92. Audiences will see and experience reputed Singaporean and International productions as well as new and upcoming performers.

The FRINGE in the Singapore Festival of Arts functions as its outreach arm, bringing the arts to the people in an accessible

and fun way.

As the people's segment of the Festival, FRINGE 92 will be friendly and approachable, encompassing a wide range of performances. They will be scheduled at the Substation, in parks and shopping centres, and other public venues. Admission for the majority of performances is free. ➤ 52





◀51 In addition, FRINGE 92 will be introducing a new segment "Fringe for Kids". These activities which cater to parents and children aged twelve and below, promises to be challenging and exciting.

International performers presented



under FRINGE 92 include the spectacular Alice Farley Dance Theatre (USA), the impressive Theatre for Africa (South Africa), the hilarious Ennio Machetto (Italy), the hypnotic Dance Theatre of Fiji, the rhythmic Thappattam (India), the bizarre Natural



Theatre Company

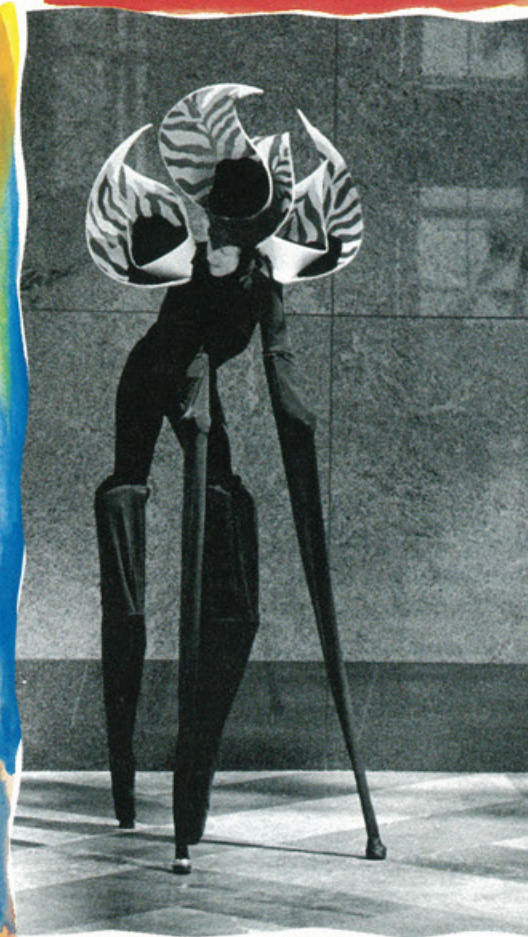
(UK), the celebrated Sirocco (Australia) and the dramatic Drum Dance of Chinese Minority Tribes (PRC).

Closer to home, FRINGE 92 will introduce contemporary works by Sutra Productions (Malaysia), Lab Projekt (Philippines), Teater Gandrik (Indonesia) and Bangkok Mobil Dance

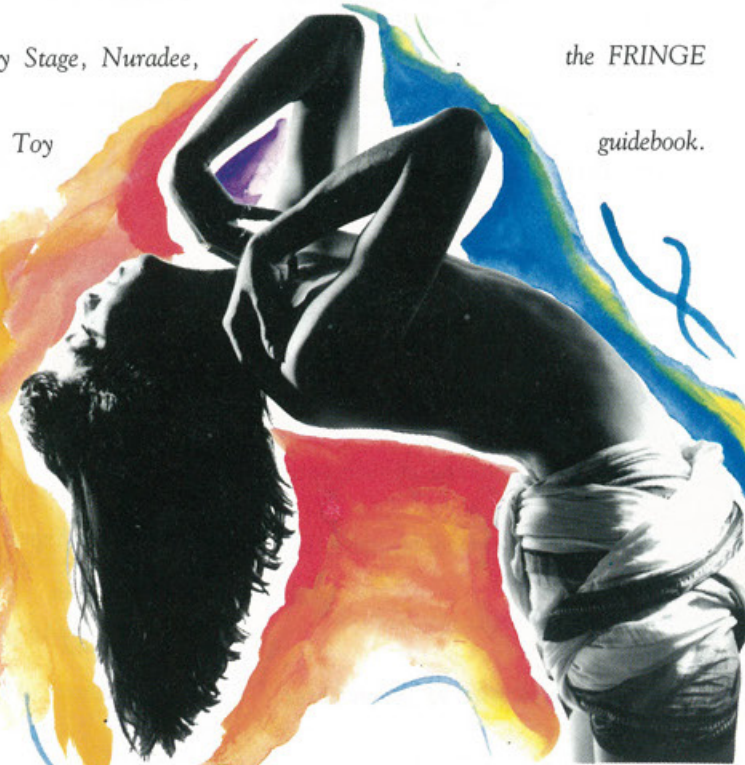


Company

(Thailand). Singapore contributions will include the Necessary Stage, Nuradee, Flame of the Forest, Toy



Factory, Sriwana, Agni Koothu and more... FRINGE 92 will also be a platform where less established but talented new artists can gain exposure. More information on FRINGE 92 will be released through the Press and in the FRINGE guidebook.





Tickets should be

booked through postal

booking using forms

available in the Festival

Guide or forms

published in the

local newspapers.

choices of selection of programme.

The allocation of tickets will be on a best-available basis by the Singapore Indoor Stadium's Computerised Ticketing System. Should tickets for the first choice be unavailable, the next alternative will be processed.

### LIMITED NUMBER OF TICKETS PER PERFORMANCE

Patrons can only book a maximum of 12 tickets per performance.

### MODE OF PAYMENT

Payment for postal booking can

be made by:

- Crossed Blank Cheques
- Credit Cards
- Money Orders
- Postal Orders

Cash payments will not be accepted.

### CREDIT CARD BOOKINGS

The following credit cards will

be accepted:

- American Express
- Diners Club
- Mastercard
- Visa

For bookings using credit cards,

please fill out the Credit Card Order Voucher in the booking form.

### CHEQUE PAYMENTS



Patrons are to make out a cheque payable to 'National Arts Council' leaving the amount blank. Write "Maximum Limit \$\_\_\_\_\_" below the dollar line on your cheque, as shown in the sample cheque.

The amount actually debited will be filled in by our ticketing officers.

In the event that no more tickets are available, the Festival Secretariat will return all unused cheques.

### IMPORTANT NOTES TO POSTAL BOOKING FORM

**Highest Value:** Number of tickets x ticket price of first, second or third choice whichever is highest.

**Handling Charges:** The Festival will

levy a handling charge of \$3 for each booking to cover administrative costs and postage.

**Maximum Limit:** Total of HIGHEST VALUE + HANDLING CHARGE

### NOTES ON POSTAL BOOKING PROCEDURES

Tickets will be mailed to patrons during and after the postal booking processing period from April to May 1992.

The Festival Secretariat cannot guarantee availability of tickets requested in postal booking.

Telephone bookings will not be accepted.

Tickets sold and allocated by postal booking cannot be exchanged or refunded.

In case of payments made in money or postal order, should the cost of tickets allocated be less than the value of payments, the refunds will be made to the patrons as soon as possible after the closing date of postal bookings.

In the event of patrons not receiving their tickets allocated to them and sent in the mail, patrons are to report the case to the Festival Secretariat at:

National Arts Council

c/o Kallang Theatre

Stadium Walk

Singapore 1439

Tel : 3460475, 3460520

Fax : 3442340

Incomplete or incorrectly filled postal booking forms will be returned by post.

### COUNTER SALES FROM TICKET BOOKING CENTRES

Festival tickets will be available at the following ticketing centres for counter sales from 12 May:

- 1 Victoria Theatre
- 2 Kallang Theatre
- 3 Singapore Indoor Stadium
- 4 Raffles City Shopping Centre
- 5 Scotts Shopping Centre
- 6 Specialists' Shopping Centre
- 7 Festival Market Telok Ayer
- 8 Forum The Shopping Mall

and all other SISTIC outlets.

Tickets will be allocated on a best-available seat basis by the Singapore Indoor Stadium's Computerised Ticketing System (SISTIC). There will be NO CHOICE OF SEATS.

Patrons are allowed to purchase a maximum of 8 tickets per performance on cash terms only.

### FAMILY PACKAGE

The National Arts Council is offering a Family Package, for the first time, for Festival patrons. Under the scheme, patrons can enjoy a 20% discount for the purchase of tickets for "Lord of the Rings" by Theatre Sans Fil on the following conditions:

- (i) Minimum purchase of 3 tickets; at least one of which will be for a child
- (ii) Maximum purchase of 6 tickets; at least two of which will be for children
- (iii) Applicable only to tickets of \$25 & \$20 for Evening Shows; and \$20 & \$15 for Matinees.



VENUE DATE	VICTORIA CONCERT HALL	VICTORIA THEATRE	KALLANG THEATRE	WTC AUDITORIUM
1 MON				
2 TUE		Practice Theatre Ensemble <i>The Evening Climb</i> EVIC2JUN \$30, \$20, \$15, \$10	HK Ballet & S'pore Dance Theatre EKAL2JUN \$40, \$30, \$20, \$10	Sibikwa Players <i>So Where To?</i> EWTC2JUN \$35, \$25, \$15, \$10
3 WED	Dallas Symphony Orchestra EVCH3JUN \$100, \$80, \$50, \$30, \$15	Practice Theatre Ensemble <i>The Evening Climb</i> EVIC3JUN \$30, \$20, \$15, \$10	HK Ballet & S'pore Dance Theatre EKAL3JUN \$40, \$30, \$20, \$10	Sibikwa Players <i>So Where To?</i> EWTC3JUN \$35, \$25, \$15, \$10
4 THU	Dallas Symphony Orchestra EVCH4JUN \$100, \$80, \$50, \$30, \$15	Practice Theatre Ensemble <i>The Evening Climb</i> EVIC4JUN \$30, \$20, \$15, \$10		Sibikwa Players <i>So Where To?</i> EWTC4JUN \$35, \$25, \$15, \$10
5 FRI	Dallas Symphony Orchestra EVCH5JUN \$100, \$80, \$50, \$30, \$15	Practice Theatre Ensemble <i>The Evening Climb</i> EVIC5JUN \$30, \$20, \$15, \$10	Ballet Folklorico de Mexico EKAL5JUN \$60, \$50, \$40, \$30, \$20, \$10	
6 SAT			Ballet Folklorico de Mexico EKAL6JUN \$60, \$50, \$40, \$30, \$20, \$10 EKAL6JUNM \$40, \$30, \$25, \$20, \$15, \$6	Theatre Fantastique EWTC6JUN \$25, \$20, \$15, \$10
7 SUN	New Music Forum EVCH7JUN \$15, \$10, \$6		Ballet Folklorico de Mexico EKAL7JUN \$60, \$50, \$40, \$30, \$20, \$10	Theatre Fantastique EWTC7JUN \$25, \$20, \$15, \$10
8 MON		Combined Indian Dance <i>A Tribute To The Seasons</i> EVIC8JUN \$25, \$20, \$15, \$8		Theatre Fantastique EWTC8JUN \$25, \$20, \$15, \$10
9 TUE		Combined Indian Dance <i>A Tribute To The Seasons</i> EVIC9JUN \$25, \$20, \$15, \$8		
10 WED				
11 THU		Paco Peña's Flamenco Dance Co EVIC11JUN \$60, \$40, \$30, \$20, \$10	Ninagawa Company <i>Macbeth</i> EKAL11JUN \$80, \$60, \$40, \$30, \$15	Gunong Sayang Association <i>Fate</i> EWTC11JUN \$35, \$25, \$15, \$10
12 FRI	Singapore Symphony Orchestra EVCH12JUN \$30, \$25, \$20, \$15, \$10	Paco Peña's Flamenco Dance Co EVIC12JUN \$60, \$40, \$30, \$20, \$10	Ninagawa Company <i>Macbeth</i> EKAL12JUN \$80, \$60, \$40, \$30, \$15	Gunong Sayang Association <i>Fate</i> EWTC12JUN \$35, \$25, \$15, \$10
13 SAT	Singapore Symphony Orchestra EVCH13JUN \$30, \$25, \$20, \$15, \$10	Paco Peña's Flamenco Dance Co EVIC13JUN \$60, \$40, \$30, \$20, \$10	Ninagawa Company <i>Macbeth</i> EKAL13JUN \$80, \$60, \$40, \$30, \$15	Gunong Sayang Association <i>Fate</i> EWTC13JUN \$35, \$25, \$15, \$10
14 SUN				

DBS AUDITORIUM	DRAMA CENTRE	JUBILEE HALL	WTC HARBOUR PAVILION	S'PORE CONFERENCE HALL
				Quanzhou Puppet Troupe ESCH5JUN \$25, \$20, \$15, \$12, \$8
Margaret Leng Tan <i>Tongues of Fire</i> EDBS6JUN \$20, \$15, \$10		Sibikwa Players <i>D.E.T. Boys High</i> EJUB6JUN \$35, \$25, \$15, \$10		Quanzhou Puppet Troupe ESCH6JUN / ESCH6JUNM \$25, \$20, \$15, \$12, \$8 / \$20, \$15, \$10, \$6
Margaret Leng Tan <i>Tongues of Fire</i> EDBS7JUN \$20, \$15, \$10		Sibikwa Players <i>D.E.T. Boys High</i> EJUB7JUN \$35, \$25, \$15, \$10		Quanzhou Puppet Troupe ESCH7JUN \$25, \$20, \$15, \$12, \$8
		Sibikwa Players <i>D.E.T. Boys High</i> EJUB8JUN \$35, \$25, \$15, \$10		Quanzhou Puppet Troupe ESCH8JUN \$25, \$20, \$15, \$12, \$8
Omer Veilleux EDBS9JUN \$20, \$15, \$10, \$6		Sibikwa Players <i>D.E.T. Boys High</i> EJUB9JUN \$35, \$25, \$15, \$10		Quanzhou Puppet Troupe ESCH9JUN \$25, \$20, \$15, \$12, \$8
Omer Veilleux EDBS10JUN \$20, \$15, \$10, \$6				
Omer Veilleux EDBS11JUN \$20, \$15, \$10, \$6				
Omer Veilleux EDBS12JUN \$20, \$15, \$10, \$6				PA Chinese Orchestra ESCH12JUN \$20, \$15, \$10, \$6
	Hi! Theatre <i>Zapt Quack! Whee!</i> EDRA13JUN \$15, \$10, \$6			PA Chinese Orchestra ESCH13JUN \$20, \$15, \$10, \$6
	Hi! Theatre <i>Zapt Quack! Whee!</i> EDRA14JUN / EDRA14JUNM \$15, \$10, \$6 / \$12, \$8, \$5			PA Chinese Orchestra ESCH14JUN \$20, \$15, \$10, \$6

FOUR DECADES EXHIBITION  
Singapore International Festival of Arts 2018



VENUE DATE	VICTORIA CONCERT HALL	VICTORIA THEATRE	KALLANG THEATRE	WTC AUDITORIUM	DBS AUDITORIUM	DRAMA CENTRE	JUBILEE HALL	WTC HARBOUR PAVILION	S'PORE CONFERENCE HALL
15 MON	The Polish Nightingales EVCH15JUN \$30, \$20, \$15, \$10, \$8		Momix EKAL15JUN \$50, \$40, \$30, \$20, \$10	Majlis Pusat & Malay Drama Gps A Dog For A Diplomat EWTC15JUN \$15, \$10, \$6	Paco Peña Flamenco Guitar EDBS15JUN \$30, \$20, \$10	Hi! Theatre Zap! Quack! Whee! EDRA15JUN \$15, \$10, \$6			
16 TUE	The Polish Nightingales EVCH16JUN \$30, \$20, \$15, \$10, \$8		Momix EKAL16JUN \$50, \$40, \$30, \$20, \$10	Majlis Pusat & Malay Drama Gps A Dog For A Diplomat EWTC16JUN \$15, \$10, \$6	Paco Peña Flamenco Guitar EDBS16JUN \$30, \$20, \$10				
17 WED	The Polish Nightingales EVCH17JUN \$30, \$20, \$15, \$10, \$8	Ninagawa Company Medea EVIC17JUN \$80, \$60, \$40, \$30, \$15							
18 THU		Ninagawa Company Medea EVIC18JUN \$80, \$60, \$40, \$30, \$15						Theatre Sans Fil Lord Of The Rings EHAR18JUN \$25, \$20, \$15, \$10	
19 FRI	The Wallace Collection EVCH19JUN \$35, \$25, \$20, \$15, \$10		Lyric Theatre The Merry Widow EKAL19JUN \$50, \$40, \$30, \$20, \$10					Theatre Sans Fil Lord Of The Rings EHAR19JUN \$25, \$20, \$15, \$10	
20 SAT	The Wallace Collection EVCH20JUN \$35, \$25, \$20, \$15, \$10		Lyric Theatre The Merry Widow EKAL20JUN \$50, \$40, \$30, \$20, \$10					Theatre Sans Fil Lord Of The Rings EHAR20JUN / EHAR20JUNM \$25, \$20, \$15, \$10 / \$20, \$15, \$10, \$6	
21 SUN	The Wallace Collection EVCH21JUN \$35, \$25, \$20, \$15, \$10	S'pore Fed of Chinese Drama Assns Striving Years EVIC21JUN \$20, \$15, \$10, \$6	Lyric Theatre The Merry Widow EKAL21JUN \$50, \$40, \$30, \$20, \$10	Pan Asian Repertory Theatre Letters To A Student Revolutionary EWTC21JUN \$40, \$30, \$20, \$10				Theatre Sans Fil Lord Of The Rings EHAR21JUN / EHAR21JUNM \$25, \$20, \$15, \$10 / \$20, \$15, \$10, \$6	
22 MON		S'pore Fed of Chinese Drama Assns Striving Years EVIC22JUN \$20, \$15, \$10, \$6		Pan Asian Repertory Theatre Letters To A Student Revolutionary EWTC22JUN \$40, \$30, \$20, \$10					
23 TUE			Lindsay Kemp Company A Midsummer Night's Dream EKAL23JUN \$50, \$40, \$30, \$20, \$10	Pan Asian Repertory Theatre Letters To A Student Revolutionary EWTC23JUN \$40, \$30, \$20, \$10					Ladysmith Black Mambazo ESCH23JUN \$40, \$30, \$20, \$10
24 WED		Bagong K. Dance Theatre EVIC24JUN \$20, \$15, \$10, \$6	Lindsay Kemp Company A Midsummer Night's Dream EKAL24JUN \$50, \$40, \$30, \$20, \$10	Pan Asian Repertory Theatre Letters To A Student Revolutionary EWTC24JUN \$40, \$30, \$20, \$10					Ladysmith Black Mambazo ESCH24JUN \$40, \$30, \$20, \$10
25 THU		Bagong K. Dance Theatre EVIC25JUN \$20, \$15, \$10, \$6							Ladysmith Black Mambazo ESCH25JUN \$40, \$30, \$20, \$10
26 FRI	Los Angeles Guitar Quartet EVCH26JUN \$35, \$25, \$20, \$15, \$10			Mallika Sarabhai & Dancers EWTC26JUN \$25, \$20, \$15, \$8	Gamelan EDBS26JUN \$15, \$10, \$6				
27 SAT	Los Angeles Guitar Quartet EVCH27JUN \$35, \$25, \$20, \$15, \$10		London City Ballet Romeo & Juliet EKAL27JUN \$80, \$60, \$40, \$30, \$20, \$10	Mallika Sarabhai & Dancers EWTC27JUN \$25, \$20, \$15, \$8					
28 SUN	Los Angeles Guitar Quartet EVCH28JUN \$35, \$25, \$20, \$15, \$10	Shanghai Theatre Academy Madam White Snake EVIC28JUN \$35, \$25, \$15, \$10	London City Ballet Romeo & Juliet EKAL28JUN \$80, \$60, \$40, \$30, \$20, \$10						

FOUR DECADES EXHIBITION  
Singapore International Festival of Arts 2018

Show: 8.00pm Matinee: 2.30pm Eg: EHAR20JUNM



VENUE DATE	VICTORIA CONCERT HALL	VICTORIA THEATRE	KALLANG THEATRE	WTC AUDITORIUM
29 MON	200 Voices EVCH29JUN \$15, \$10, \$8, \$6	Shanghai Theatre Academy Madam White Snake EVIC29JUN \$35, \$25, \$15, \$10	London City Ballet Romeo & Juliet EKAL29JUN \$80, \$60, \$40, \$30, \$20, \$10	
30 TUE		Shanghai Theatre Academy Madam White Snake EVIC30JUN \$35, \$25, \$15, \$10	London City Ballet Mixed Bill EKAL30JUN \$50, \$40, \$30, \$20, \$15, \$10	Theatreworks Private Parts EWTC30JUN \$35, \$25, \$15, \$10
1 WED		Shanghai Theatre Academy Madam White Snake EVIC1JUL \$35, \$25, \$15, \$10		Theatreworks Private Parts EWTC1JUL \$35, \$25, \$15, \$10
2 THU				Theatreworks Private Parts EWTC2JUL \$35, \$25, \$15, \$10
3 FRI		Shanghai Theatre Academy The Shared Kitchen EVIC3JUL \$35, \$25, \$15, \$10		Theatreworks Private Parts EWTC3JUL \$35, \$25, \$15, \$10
4 SAT		Shanghai Theatre Academy The Shared Kitchen EVIC4JUL \$35, \$25, \$15, \$10		Theatreworks Private Parts EWTC4JUL / EWTC4JULM \$35, \$25, \$15, \$10 / \$25, \$20, \$15, \$10
5 SUN		Shanghai Theatre Academy The Shared Kitchen EVIC5JUL \$35, \$25, \$15, \$10		Theatreworks Private Parts EWTC5JUL / EWTC5JULM \$35, \$25, \$15, \$10 / \$25, \$20, \$15, \$10
6 MON				Theatreworks Private Parts EWTC6JUL \$35, \$25, \$15, \$10
7 TUE				Theatreworks Private Parts EWTC7JUL \$35, \$25, \$15, \$10
8 WED				Theatreworks Private Parts EWTC8JUL \$35, \$25, \$15, \$10
9 THU				Theatreworks Private Parts EWTC9JUL \$35, \$25, \$15, \$10
10 FRI				Theatreworks Private Parts EWTC10JUL \$35, \$25, \$15, \$10
11 SAT				Theatreworks Private Parts EWTC11JUL / EWTC11JULM \$35, \$25, \$15, \$10 / \$25, \$20, \$15, \$10
12 SUN				Theatreworks Private Parts EWTC12JUL / EWTC12JULM \$35, \$25, \$15, \$10 / \$25, \$20, \$15, \$10

Show: 8:00pm Matinee: 2:30pm Eg: EWTC4JULM

## KALLANG THEATRE



CIRCLE

Momix  
A \$50 B \$40 C \$30  
D \$20 E \$10

Ninagawa Company  
(Macbeth) A \$80 B \$60 C \$40  
D \$30 E \$15



Ballet Folklórico  
de Mexico  
(Evening) A \$60 B \$50  
C \$40 D \$30 E \$20 F \$10  
(Matinee) A \$40 B \$30  
C \$25 D \$20 E \$15 F \$6

London City Ballet  
(Full-Length) A \$80 B \$60  
C \$40 D \$30 E \$20 F \$10  
(Mixed Bill) A \$50  
B \$40 C \$30 D \$20  
E \$15 F \$10



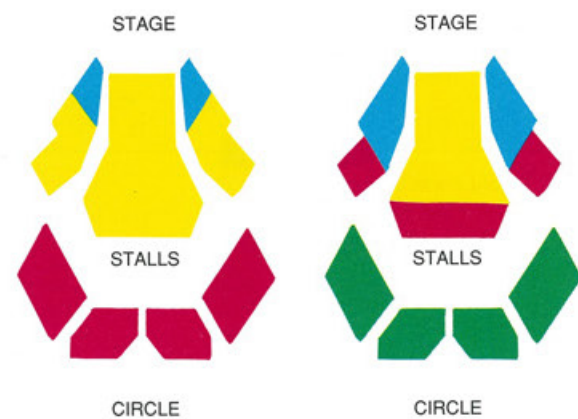
Lyric Theatre  
A \$50 B \$40 C \$30  
D \$20 E \$10



Lindsay Kemp  
Company  
A \$50 B \$40 C \$30  
D \$20 E \$10



## DBS AUDITORIUM



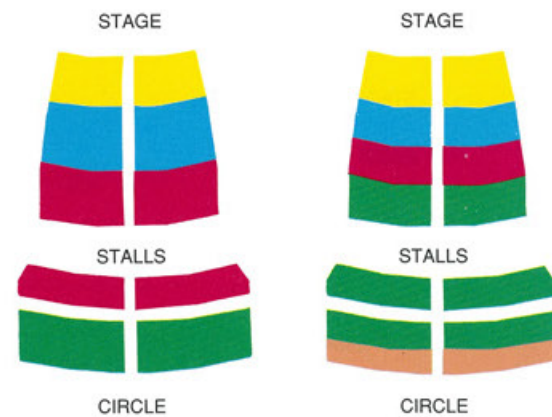
Margaret Leng Tan  
A \$20 B \$15 C \$10

Paco Peña Flamenco  
Guitar  
A \$30 B \$20 C \$10

Gamelan  
A \$15 B \$10 C \$6

Omer Veilleux  
A \$20 B \$15 C \$10 D \$6

## VICTORIA THEATRE



Practice Theatre  
Ensemble  
A \$30 B \$20 C \$15 D \$10

Combined Indian Dance  
A \$25 B \$20 C \$15 D \$8

Singapore Federation  
of Chinese Drama  
Associations  
A \$20 B \$15 C \$10 D \$6

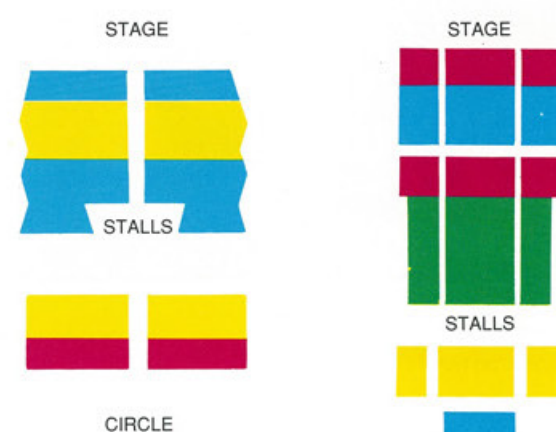
Shanghai Theatre  
Academy  
A \$35 B \$25 C \$15 D \$10

Bagong K. Dance  
Theatre  
A \$20 B \$15 C \$10 D \$6

Paco Peña's Flamenco  
Dance Company  
A \$60 B \$40 C \$30  
D \$20 E \$10

Ninagawa Company  
(Medea) A \$80 B \$60  
C \$40 D \$30 E \$15

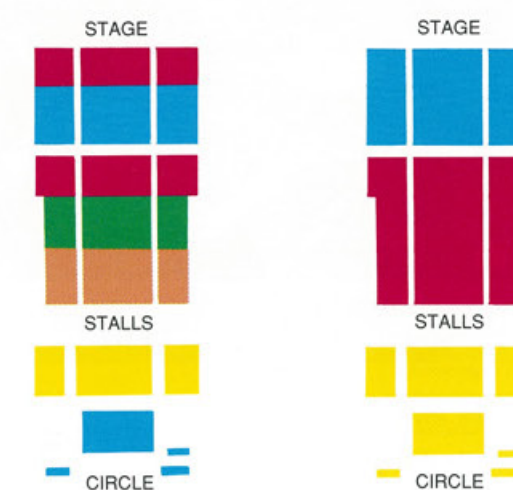
## DRAMA CENTRE



Hi! Theatre  
(Evening) A \$15 B \$10 C \$6  
(Matinee) A \$12 B \$8 C \$5

200 Voices  
A \$15 B \$10 C \$8 D \$6

## VICTORIA CONCERT HALL



Singapore Symphony Orchestra  
A \$30 B \$25 C \$20 D \$15 E \$10

Dallas Symphony Orchestra  
A \$100 B \$80 C \$50 D \$30 E \$15

The Polish Nightingales  
A \$30 B \$20 C \$15 D \$10 E \$8

The Wallace Collection  
A \$35 B \$25 C \$20 D \$15 E \$10

Los Angeles Guitar Quartet  
A \$35 B \$25 C \$20 D \$15 E \$10

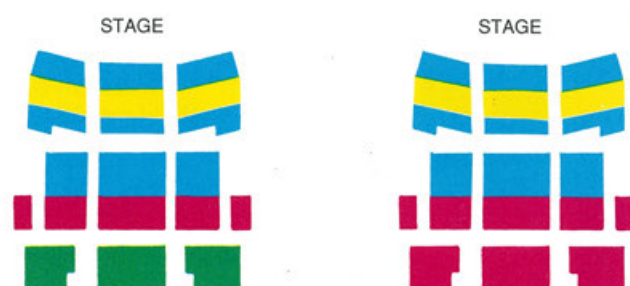
New Music Forum  
A \$15 B \$10 C \$6

## JUBILEE HALL



Sibikwa Players  
A \$35 B \$25 C \$15 D \$10

## WTC AUDITORIUM



Gunong Sayang Association  
A \$35 B \$25 C \$15 D \$10

Theatreworks  
(Evening) A \$35 B \$25 C \$15 D \$10  
(Matinee) A \$25 B \$20 C \$15 D \$10

Sibikwa Players  
A \$35 B \$25 C \$15 D \$10

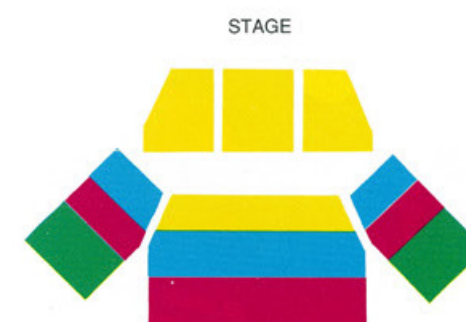
Theatre Fantastique  
A \$25 B \$20 C \$15 D \$10

Pan Asian Repertory Theatre  
A \$40 B \$30 C \$20 D \$10

Mallika Sarabhai & Dancers  
A \$25 B \$20 C \$15 D \$8

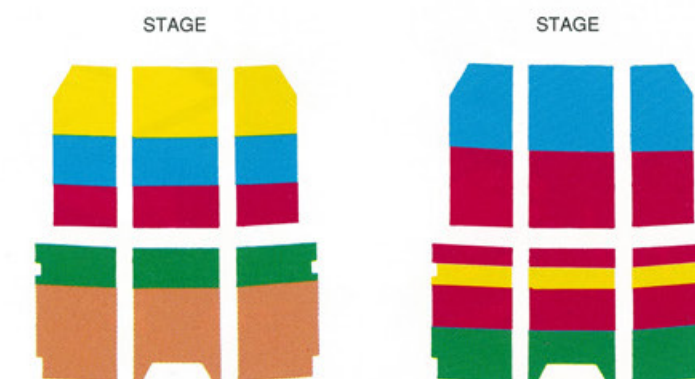
Majlis Pusat & S'pore Malay  
Drama Groups  
A \$15 B \$10 C \$6

## WTC HARBOUR PAVILION



Theatre Sans Fil  
(Evening) A \$25 B \$20 C \$15 D \$10  
(Matinee) A \$20 B \$15 C \$10 D \$6

## SINGAPORE CONFERENCE HALL



Quanzhou Puppet Troupe  
(Evening) A \$25 B \$20 C \$15 D \$12 E \$8  
(Matinee) A \$20 B \$20 C \$15 D \$10 E \$6

People's Association Chinese  
Orchestra  
A \$20 B \$15 C \$10 D \$6

Ladysmith Black Mambazo  
A \$40 B \$30 C \$20 D \$10

FOUR DECADES EXHIBITION  
Singapore International Festival of Arts 2018







Example	First Choice			Second Choice			Third Choice			Highest Value
	Performance Code	Ticket Price	No. of Tickets	Performance Code	Ticket Price	No. of Tickets	Performance Code	Ticket Price	No. of Tickets	
	ESCH 12 JUN	\$20	2	ESCH 17 JUN	\$25	3	EKAL 10 JUN	\$15	6	\$90
	EWTC 30 JUN	\$10	4	EVIC 24 JUN	\$20	5	EVCH 28 JUN	\$35	4	\$140
1		\$			\$			\$		\$
2		\$			\$			\$		\$
3		\$			\$			\$		\$
4		\$			\$			\$		\$
5		\$			\$			\$		\$
6		\$			\$			\$		\$
7		\$			\$			\$		\$
8		\$			\$			\$		\$
9		\$			\$			\$		\$
10		\$			\$			\$		4
11		\$			\$			\$		\$
12		\$			\$			\$		\$
Family Package		\$			\$			\$		\$
		\$			\$			\$		\$
	Total			Total			Total			
Please indicate if split seating is acceptable should there be no adjacent seats. <input type="checkbox"/> Yes <input type="checkbox"/> No							Total Highest Value of Tickets      \$			
							Plus Handling Charge      \$3			
							Maximum Limit      \$			

#### IMPORTANT NOTES

##### Highest Value

Highest Value = Number of Tickets x Ticket price of First, Second or Third Choice, whichever is highest

##### Handling Charges

Please add handling charges to your total highest value of tickets.  
Handling charges rate: \$3

##### Maximum Limit

Maximum Limit = Total Highest Value + Handling Charge of Tickets

#### Family Package

Patrons can enjoy a 20% discount for the purchase of tickets for "Lord of the Rings" by Theatre Sans Fil on the following conditions:

- (1) Minimum purchase of 3 tickets; at least one of which will be for a child
- (2) Maximum purchase of 6 tickets; at least two of which will be for children
- (3) Applicable only to tickets of \$25 & \$20 for evening shows; and \$20 & \$15 for Matinees

Send with remittance to:  
Singapore Festival of Arts 1992  
National Arts Council  
c/o Kallang Theatre  
Stadium Walk  
Singapore 1439  
Tel: 3460475, 3460520  
Fax: 3442340

65

#### GROUPS DATE TIME

Pan Asian Repertory Theatre	23 June	2pm
Ladysmith Black Mambazo	24 June	2pm
Bagong	25 June	11am
Los Angeles Guitar Quartet	26 June	2pm

The workshop programme will be centralised at the Substation. Further details will be announced in the press and in the Fringe Guide.

Attendance for the majority of workshops is free but prior registration is necessary.



## A HOTEL FOR PEOPLE WHO DON'T LIKE HOTELS.

The more they travel, the more they'd rather stay at home. So next time you need to make a booking for a frequent business traveller, choose the one hotel that looks and feels like home.

The Continental Wing. First choice, second home. At Omni Marco Polo.

OMNI MARCO POLO HOTEL  
SINGAPORE  
WARMLY WELCOMING PEOPLE.

FOR RESERVATIONS

CALL 474 7141. EXT. 1717

FOUR DECADES EXHIBITION  
Singapore International Festival of Arts 2018







## Nurturing the Seeds of Music . . .

Music is the language which unites people regardless of ethnic group or religion. It evokes similar emotion in everyone.

Yamaha Music Foundation and its Music Schools in 38 countries have been enjoying a reputation for educational performance based on its unique teaching principles.

The Foundation has given more emphasis to developing music creativity and self-expression. It has also organised complementary activities like

At the United Nations Headquarters, New York

the highly acclaimed Junior Original Concert which trained children to perform their own compositions around the world including Asia Oceania, Europe, U.S.A. and in the United Nations.

Together with international events like the World Popular Song Festival, Yamaha has introduced widespread appreciation of music and is dedicated to the cultivation of music culture.



1st Asia Oceanic Junior Original Concert '91 in Singapore



**YAMAHA MUSIC SCHOOL**

**CLEMENTI** 451 Clementi Ave 3 #03-309 S(0512) Tel: 777 5919 **HOUGANG** 202 Hougang St 21 #03-00 S(1953) Tel: 287 6385 **MARINE PARADE** 87 Marine Parade Central #03-301 S(1544) Tel: 344 4588  
**ORCHARD** 68 Orchard Road #07-03 Plaza Singapura S(0923) Tel: 336 3311 **THOMSON** 301 Upper Thomson Road #03-24 Thomson Plaza S(2057) Tel: 740 9333  
**PASIR RIS** 443 Pasir Ris Drive 6 #03-02 S(1851) Tel: 581 0633 **YISHUN** 701A Yishun Ave 5 #03-01 S(2776) Tel: 756 1077  
**AUTHORISED SCHOOL: SAFRA TAMPINES CLUBHOUSE** 1/A Tampines Street 92 S(1852) Tel: 785 8800

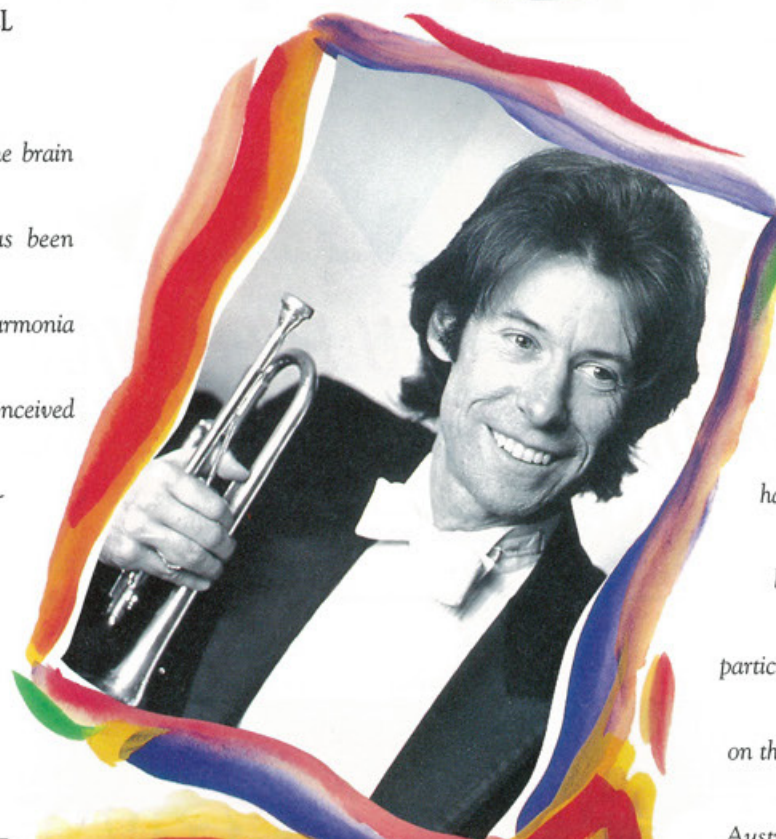
**YAMAHA MUSIC ACADEMY-SINGAPORE** 449 Yio Chu Kang Road S(2880) Tel: 483 3931

# The Wallace Collection

VICTORIA CONCERT HALL  
19 - 21 JUNE

The Wallace Collection is the brain child of John Wallace, who has been Principal Trumpet of the Philharmonia Orchestra since 1976. It was conceived with the primary aim of exploring, promoting and performing the repertoire of the trumpet.

The Wallace Collection's repertoire is formidable indeed – showcasing not just the calibre of the musicians but fore-grounding the beauty that the trumpet is capable of, ranging from the brilliance and originality of Gabrielli, to the intricacy and delicacy of Tippet to the dynamism of Stravinsky.



The Wallace Collection has gained a reputation for exciting programming and outstanding performances and have participated in three Edinburgh festivals and toured and participated in international festivals on the American continents, Europe, Australia, New Zealand and Asia. At the Singapore Festival of Arts 92, the Wallace Collection will be presenting Turkish Delights, a rousing programme of unrivalled brilliance and originality.



FOUR DECADES EXHIBITION  
Singapore International Festival of Arts 20



# PARKWAY PARADE'S E N D L E S S A T T R A C T I O N S

**EVERYTHING YOU EVER WANTED  
IN ONE SHOPPING CENTRE**

80 Marine Parade Road Singapore 1544

# Paco Peña Flamenco Guitar

DBS AUDITORIUM  
15 - 16 JUNE



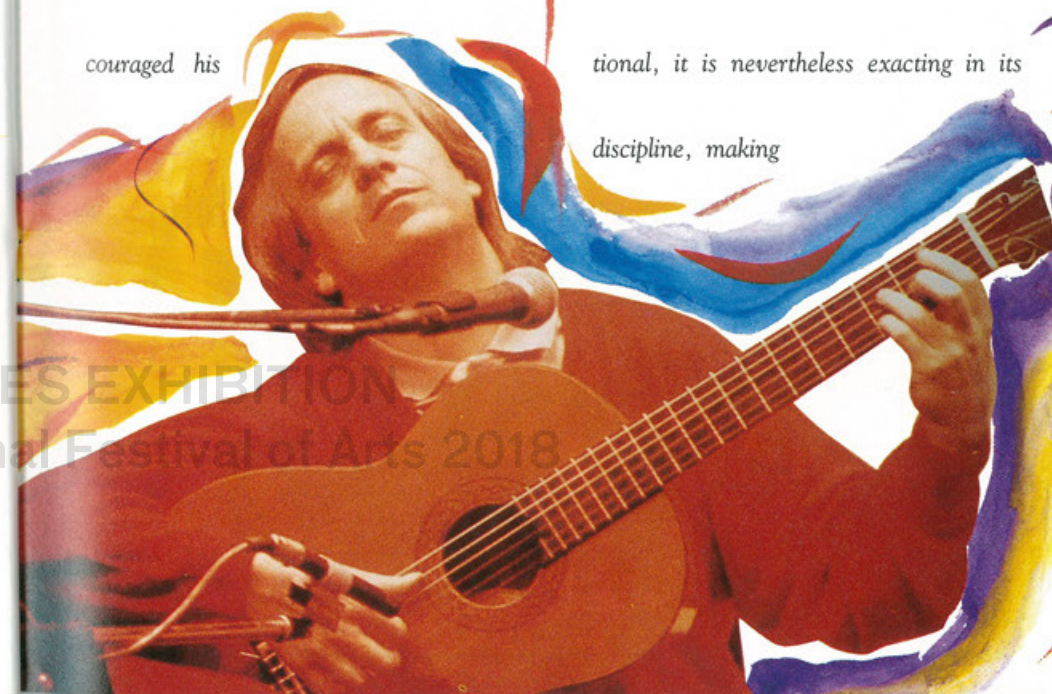
career. His New York debut in 1983 was highly acclaimed – “Certainly the most exciting flamenco concert this reviewer has heard this season.”

The guitar, apart from the voice, is the only musical instrument used in flamenco music because of its lyrical qualities and its ability to adapt to the nuances of the flamenco sound. The music is expressive of the unusual temperament of the Andalusians, yet is not confined to a particular locale or people. Highly improvisational, it is nevertheless exacting in its discipline, making

each performance a joy because of its quality.

Paco Peña is one of the world's masters of the guitar and has helped the flamenco scale new heights – “With its pungent Hispanic aromas compounded by irrepressible rhythmic vitality and sense of momentum, Paco Peña's flamenco playing was indeed impossible to resist.” – The Times.

Paco Peña was born in Cordoba, Spain and made his first professional appearance at the age of 12. On his first visit to London in 1963, he found a receptive audience which greatly encouraged his



Sponsored by:  
DBS BANK  
DBSBANK

**WORLD CLASS REFRESHMENT  
FOR A WORLD CLASS FESTIVAL**



UNILEVER SINGAPORE PTE LTD

TRADES EXHIBITION  
International Festival of Arts 2018





*A cosmopolitan city merits a hotel of international distinction.*

*A hotel where guests enjoy impeccable service and tasteful surroundings in the heart of the business, shopping and entertainment district.*

*Royal Holiday Inn Crowne Plaza, fully renovated, is destined to become one of Singapore's premier properties, for it subtly combines the finest of European traditions and the efficiency of today's modern technology.*

**ROYAL**  
**Holiday Inn CROWNE PLAZA SINGAPORE**  
 Stay with someone who knows you.  
 25 Scotts Road, Singapore 0922.  
 Tel: (65) 737-7966 Telex: RS 21818 Fax: (65) 737-6646

## SUKMAINDRA

The ultimate name in excellent Malay/Indonesian dining.

The setting spells elegance and taste.

The authentic Malay/Indonesian dishes and Bruneian specialties smack of a blend of exotic spices.

The VIP rooms offer exclusivity and personalised service.

The impeccable service beckons you back.

And, the affordable prices are too good to be true.

Live Malay cultural music nightly except Thursdays.

### DAILY OPENING HOURS

Lunch: 11.30 am to 3.00 pm

Dinner: 6.30 pm to 10.30 pm

**Sukmaindra Restaurant**

ريستوران سوكماليندرا  
 (Malay/Indonesian Cuisine)

Adjacent to Royal Holiday Inn Crowne Plaza, Level 3,  
 25 Scotts Road, Singapore 0922. Tel: (65) 731-7988.

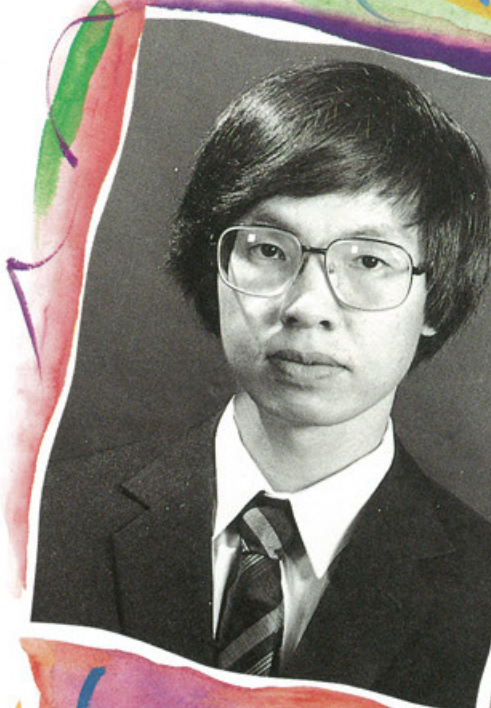


# New Music Forum

VICTORIA CONCERT HALL  
 7 JUNE

For the second consecutive Festival, the New Music Forum will once again provide a platform for new Singaporean works. This year's programme promises to be exhilarating with works of young Singaporean composers. Three up-and-coming exciting composers, Phoon Yew Tien, Er Yenn Chwen and Tan Chan Boon will present new works for this special occasion. Greater impetus is given to the programme with a work by the Filipino composer, Francisco Feliciano, who is also well-known for conducting major orchestras in the Philippines.

The compositions of the four participating composers will be performed by players from the Singapore Symphony Orchestra. Lim Yau will again conduct.





The Volvo 960 now comes with a brand new safety feature:

A 204 bhp, straight-six engine.

Safe driving is the knowledge that you have power in reserve.

Because when you overtake, you need to do it as swiftly as possible. And get back to your side of the road.

With the new Volvo 960, you always have power in the bank to overtake safely. Even if you're doing 150 on a trunk road.

To do this new engine full justice, it's linked to an electronically controlled transmission.

With a choice of three driving modes.

If you select the Economy mode (ideal for city driving) you cruise along at the optimum fuel efficiency.

In the Performance mode, every ounce of engine power goes straight to your wheels when you step down on the accelerator.

**24 valves,  
204 bhp, 213 kmh.  
How much safer  
can a Volvo get?**

If you're driving on wet and slippery roads, the 'W' mode gives you the extra traction you need.

At moments like this, it's reassuring to know the car you're driving is still a Volvo.

Especially with Volvo's latest advance in passenger safety: the Side Impact Protection System (SIPS).

Instead of one spot taking the full

force of a side-on collision, SIPS disperses the impact in different directions. Where it's absorbed by reinforced pillars and panels.

So there's less damage to the car, and a greater 'safety margin' for its occupants.

Volvo's interest in safety extends to the environment as well.

Every Volvo 960 comes with a catalytic converter, aided by a Lambda Sond: an oxygen sensing device that helps cut harmful exhaust fumes by 90%.

If you'd like to test-drive this new Volvo, call 4731488. We'll be happy to send a car to your home or office.

Any way you look at it, choosing a Volvo 960 is the safest decision you can make.

**VOLVO**



SM Motors 5 Leng Kee Road, Singapore 0315. Tel: 4731488/4744740.

# Gamelan

DBS AUDITORIUM  
26 JUNE



Gamelan gets its name from the

Javanese word "Gamel", which means a type of hammer, like a blacksmith's hammer. The word "gamelan", apart from being the word for "orchestra",

also refers to the method of playing the instruments by striking them - they

are almost entirely percussion.

Gamelan promises to be a different

experience for those used to Western music. Unlike the Western orchestra, whose heart is the string section, in the gamelan, it is the percussion section, which is made up of various types of xylophones and glockenspiels with at least one large gong.

Sixteen musicians and fourteen

vocalists from the Bagong K. Dance Theatre will be putting up a gamelan concert consisting of both modern and traditional pieces for the Singapore Festival of Arts 92.

Sponsored by:  
THE KEPPEL GROUP OF COMPANIES

**The Keppel**  
Group of  
Companies

ES EXHIBITION  
Festival of Arts 2018





On SBC 5 we'll treat you to the best of TV from around the world. On 8 it's the best of Mandarin in variety shows, local and imported

dramas. And on 12 you'll get the finest of sports, arts and documentaries. SBC: the entertainment channels of Singapore, today and tomorrow.

# 200 voices

VICTORIA CONCERT HALL  
29 JUNE

The Singapore Festival of Arts 92 is proud to present a combined schools choir of 200 Voices following their success at the last Festival.

The 200-strong choir is drawn mainly from the Choral Excellence Schools Programme comprising students from five participating secondary

schools. 200 Voices is presented under the coordination of David Lim and conducted by Goh Say Meng.

The Choir's rigorous training culminates in the celebration of musical voices at the Festival with their contributions of *River of Happiness* and other Mandarin selections accompanied

by the Combined Schools Chinese Orchestra drawn from the National Music Camp.

Also featured with the 200 Voices are two Choir of the Year Award-winning school choirs – Fairfield Methodist Secondary School (1991) and the Anglo-Chinese Junior College (1989).



FOUR DECADES  
Singapore International Festival of Arts



# Festival Restaurants

Offers Valid For June '92 Only

No celebration in Singapore is complete without food, and the Singapore Festival of Arts 92 is no different. To add to the festive mood in June, our Festival Restaurants will offer Festival goers the following upon presentation of their tickets.



PREGO; TEA

ROOM. At

Scandals, cover

charge will be

waived

on all

days of the week.

The Luna Coffee House at

Apollo Hotel and Steven's Corner

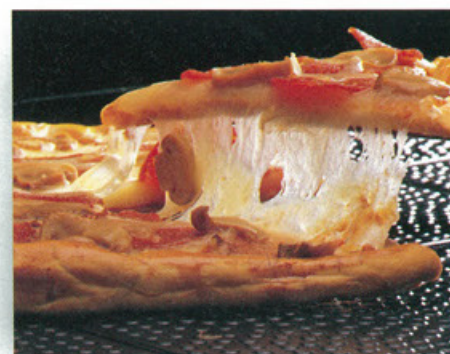
at Hotel Equatorial will be offering

a 10% discount.

A&W will offer discounts on

selected meals.

Milano Restaurant will be offering



FOUR DECADES EXHIBITION  
Singapore International Festival of Arts 2018  
an 11% (9+2 for the year '92) discount

at any Milano restaurant.







## THE GOLDEN THEATRE

A SUBSIDIARY OF THE OVERSEAS EMPORIUM GROUP

WILL BE CONVERTED INTO AN ARTS CENTRE

WHICH CONSISTS OF THREE CINEMAS AND ONE LARGE-SIZED THEATRE

## GOLDEN ARTS CENTRE



GOLDEN THEATRE SHALL BE A FIRST CLASS VENUE  
WITH SOPHISTICATED LIGHTING & SOUND SYSTEMS  
FOR THE PERFORMERS



中僑影业有限公司

OVERSEAS MOVIE (PRIVATE) LIMITED

NO. 1 PARK ROAD #04-21 PEOPLE'S PARK COMPLEX, SINGAPORE 0105.  
TEL: 5350555 FAX: 5350783

# Shanghai Theatre Academy

VICTORIA THEATRE  
28 JUNE - 5 JULY



The poignant tale of

a pair of star-crossed lovers –

one a mortal and the other a super-

natural being. According to the

Chinese belief, the twain shall

never meet. This is the all time

favourite classic story of

Madam White Snake,

which is often associated

with Chinese opera.

Shanghai Theatre Academy makes an  
audacious attempt at the Festival in  
presenting it as a period drama without  
the heavily sequined costumes and the  
traditional pomposity associated with  
opera.

Although modest in comparison, the

production, however, is not lacking in

lustre with their experimental use of

contemporary drama techniques,

liberal use of modern creative

lighting, and dance move-

ments. The audience

will marvel and

welcome the

soft fluid



costumes that are employed in this

production instead of the usual sequined

heaviness of Chinese operas.

Apart from this period offering,

Shanghai Theatre Academy is also

presenting a contemporary play "The

Shared Kitchen" which is a story reflec-

ting the daily life of people in Shanghai.

Sponsored by:  
OVERSEAS MOVIE (PTE) LTD



FOUR DECADES EXHIBITION

Singapore International Festival of Arts 2008





## Partners with the Arts



Theatre is much more than entertainment. Together with all art forms, it plays a fundamental role in advancing cultural awareness throughout the community.

Mobil's continuing partnership with the arts enables people to experience exciting forms of expression firsthand.

From the 1977 inception of the Singapore Festival of Arts to innovative Theatreworks productions such as *M Butterfly*, Mobil is at the forefront of arts sponsorship in Singapore.



Since ancient times, theatre has been a primary vehicle for communicating important issues and giving form to the creativity of individuals. Great theatre requires harmonious co-operation between actors, directors, and technicians. Similarly, by harmonizing the efforts of thousands of Mobil employees, we are able to bring the finest products and services to our customers.

**Mobil**

# Theatreworks

PRESENTS: a COMEDY directed by ONG KENG SEN

PRIVATE PARTS  
WTC AUDITORIUM  
30 JUNE - 12 JULY

Singapore's premier professional theatre company has an impressive history, presenting plays ranging from the classics to contemporary works written by prominent and young playwrights. For this Festival, Theatreworks will be staging a bizarre comedy written by well-known Singaporean playwright Michael Chiang entitled *Private Parts*.

*Private Parts*, set in 1995, centres on a successful yuppie talk-show host and the private lives of two transsexuals. Their lives take an unexpected turn after a talk-show when the two transsexuals open their lives to public scrutiny and discrimination.

## PRIVATE PARTS MICHAEL CHIANG

Theatreworks has had a string of sell-out shows, which include *Beauty World*, *Fried Rice Paradise*, *Safe Sex*, and the memorable *M. Butterfly* in the Singapore Festival of Arts 90.

Sponsored by:  
MOBIL OIL SINGAPORE

**Mobil**





## A TOWERING SALUTE FOR THE SINGAPORE FESTIVAL OF ARTS.

We, together with the people of Singapore are proud of your pursuit for excellence in the arts. We feel a special camaraderie because the Marina Mandarin itself is a towering art piece to behold. Its 575 rooms and suites encircle a magnificent atrium soaring 21 storeys. And, situated in the heart of Marina Square,

which houses Southeast Asia's largest shopping mall, leisure and entertainment centre is just a doorway away. What's more, it's mere minutes from the central business district and the Changi International Airport. So you'll have easy access to and from almost anywhere in Singapore. And more importantly,

we understand what it takes to reach for the best. That's why we're so proud of our Marina Mandarin Lady. She makes the difference.



MARINA MANDARIN SINGAPORE  
6, Raffles Boulevard, Marina Square,  
Singapore 0103. Tel : 338 3388

St. Christopher.

GOLF APPAREL  
& ACCESSORIES



St. Christopher  
Boutiques:

Level 1,  
Singapore Daimaru,  
Liang Court.

Level 2,  
Tokyu Department Store,  
Marina Square.



St. Christopher

St. Christopher is a registered trademark of St. Christopher Inc. • Distributed by O'Connor's Fashion Singapore Pte Ltd

# Ninagawa Company

KALLANG THEATRE  
MACBETH  
11 - 13 JUNE  
VICTORIA THEATRE  
MEDEA  
17 - 18 JUNE

The founder of the Ninagawa Company, Yukio Ninagawa, is unequalled in originality and range, and is both a commercial and critical success.

A true modernist, Ninagawa revolts against stifling restriction and too traditional expectations, arguing eloquently and persuasively instead for a "fusion" of both east and west in his art. His productions are experiences in the dismantling and reconstruction of ancient Japanese dramatic forms.

For the Singapore Festival of

Arts 92, the Ninagawa Company will be bringing two highly acclaimed productions – Shakespeare's MACBETH and Euripides' MEDEA. Ninagawa's MACBETH is set in 16th century



and incorporates both Shakespearean and Japanese imagery. Critics have marvelled at the extensive use of cherry blossoms – creating a spectacular effect of eerie beauty, because for the Japanese, cherry blossoms connote death and tragedy.

MEDEA has been

described as a Kabuki-style,

all-male production possessing an "emotional realism within ritualistic grandeur" (Billington). Visually, the production is stunning – in antique Kabuki-like costumes with exotic head-dresses. The traditional Greek chorus becomes the Noh-inspired, Shamusen-strumming chorus in Ninagawa's hands. Both these productions also have "political" undertones – the terrific battlescene at the end of MACBETH is played against a recording of Japanese riot police using teargas against students at a 1960s demonstration and the booming noise as Medea kills her children in an atomic explosion.





# GET GOING



MAXIMISE YOUR TIME AND MONEY

**MULTILINK**

First get the bank account that'll allow you the freedom to get about.

**MultiLink.** It combines multi-services into one account, one statement. Gives you time to get going.

## ALL THE CONVENIENCE OF A CHEQUE BOOK

Your MultiLink Account comes with a specially designed cheque book and all the benefits of a chequing account.

## DAILY INTEREST

Your funds never lie idle as interest is earned daily for savings balances of \$10 to below \$3,000, at 3.50% p.a. You will enjoy a higher interest of 4.25% p.a. with balances of \$3,000 up to \$50,000. For balances above \$50,000, the interest is even more attractive at 4.60% p.a.

## AUTOMATIC FIXED DEPOSIT LINKAGE WITH UP TO \$100,000 IN OVERDRAFT

A fixed deposit facility will be made available to you automatically. In addition, your fixed deposits and ACU deposits will enjoy automatic overdraft facilities up to \$100,000. Higher amounts are available on application.

## CLEAN OVERDRAFT

If your income is \$24,000 or more per annum, a clean overdraft is available on application.

## AND MUCH MORE...

- OUB ATM Service
- Shared ATMNETS Service
- 24-hour PhoneBank Service
- Bill Payment through PhoneBank, ATM, GIRO/Interbank GIRO
- One Monthly Statement
- Special Discounts from many merchants

For more details, please call toll-free at our MultiLink Customer Service Line: 5330696 during office hours.



Overseas Union Bank Limited

Head Office: 1 Raffles Place, OUB Centre, Singapore 0104. Tel: 5338686

# Practice Theatre Ensemble

THE EVENING CLIMB  
VICTORIA THEATRE  
2 - 5 JUNE

"The Evening Climb" will be Practice Theatre Ensemble's offering for the Singapore Festival of Arts 92.

Led by well-known Singaporean dramatist and 1989 Cultural Medallion recipient, Kuo Pao Kun, Practice

Theatre Ensemble's original multi-lingual production revolves around a group of old people, who, retired and ignored, decide to take a trip together. The play explores old people's

desire to retain and express their inquisitiveness and creativeness. Liberated from their daily routine, their trip leads them to new discoveries and

illumination which "normal" working people are insensitive to and unsympathetic towards.

Kuo Pao Kun, a prominent figure in Singaporean theatre, has successfully bridged the gap between Mandarin and English plays. His attempt at a multi-lingual play, "Mama Looking for Her Cat" was well received.

Goh Lay Kuan will be choreographing the dance section. The cast includes Ren Bao Xian from Beijing and Singapore's comedien Wang Sha.



# The Evening Climb

Sponsored by:  
HONG LEONG FOUNDATION



HONG LEONG FOUNDATION

FOUR DECADES EXHIBITION  
Singapore International Festival of Arts 2018



# Sibikwa Players

SO WHERE TO?  
WTC AUDITORIUM  
2-4 JUNE

The Sibikwa Players was founded by Smal Ndaba in 1988. It is committed to community service, taking theatre mainly to the people living in townships and squatter camps on the fringes of South Africa's cities.



The Sibikwa Players see theatre as a political and social tool and have been credited with creating a new genre of theatre called "township theatre" which is distinguished by broad characterisation and a mix of drama and music.

In "So Where To?", which puns on the name of the black South African township of Soweto (scene of the 1976 South Africa. Through "So Where To?", Ndaba gives voice to a people attempting to define and articulate themselves against seemingly insurmountable odds.

Sibikwa Players will also be staging "D.E.T Boys High" at the Singapore Festival of Arts 92. The play follows on the heels of "So Where To?", the highly acclaimed play by Smal Ndaba which is also being staged at the Singapore Festival of Arts 92.



# Sibikwa Players

D.E.T. BOYS HIGH  
JUBILEE HALL, RAFFLES HOTEL  
6-9 JUNE



school's caretaker whose job is to clean the toilets.

"D.E.T. Boys High" is a very contemporary play reflecting changes which are taking place in South Africa today. It refrains from making bold anti-apartheid statements and shouting slogans, but more subtly examines the black condition in South Africa via dance, song, humour and dialogue.

"D.E.T. Boys High" follows on the heels of "So Where To?", the highly acclaimed play by Smal Ndaba which is also being staged at the Singapore Festival of Arts 92.

and the nature of black education in South Africa. The play takes a close look at the lives of two young pansulas (a sub-culture in the township), a rural boy coming to the town and a conscientious scholar - as well as the

"D.E.T. Boys High" is set in a boy's toilet in a township high school and looks at the lives of four young black boys who have been affected by the continual school disruptions



the township), a rural boy coming to the town and a conscientious scholar - as well as the

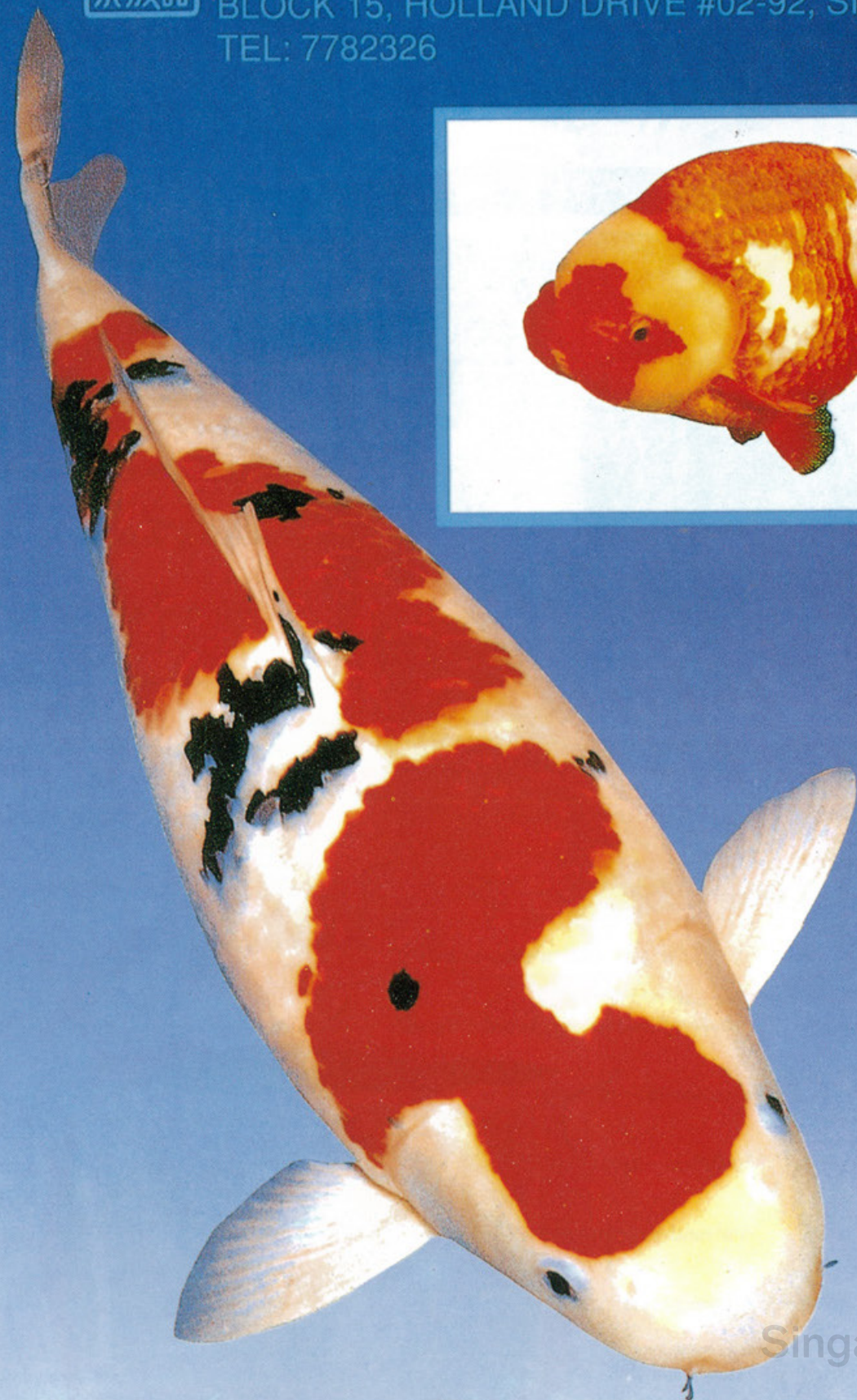




# BLUE SEA AQUARIUM

BLOCK 15, HOLLAND DRIVE #02-92, SINGAPORE 1027

TEL: 7782326



FOUR DECADES EXHIBITION  
Singapore International Festival of Arts 2018

# Singapore Federation of Chinese Drama Associations

STRIVING YEARS  
VICTORIA THEATRE  
21 - 22 JUNE

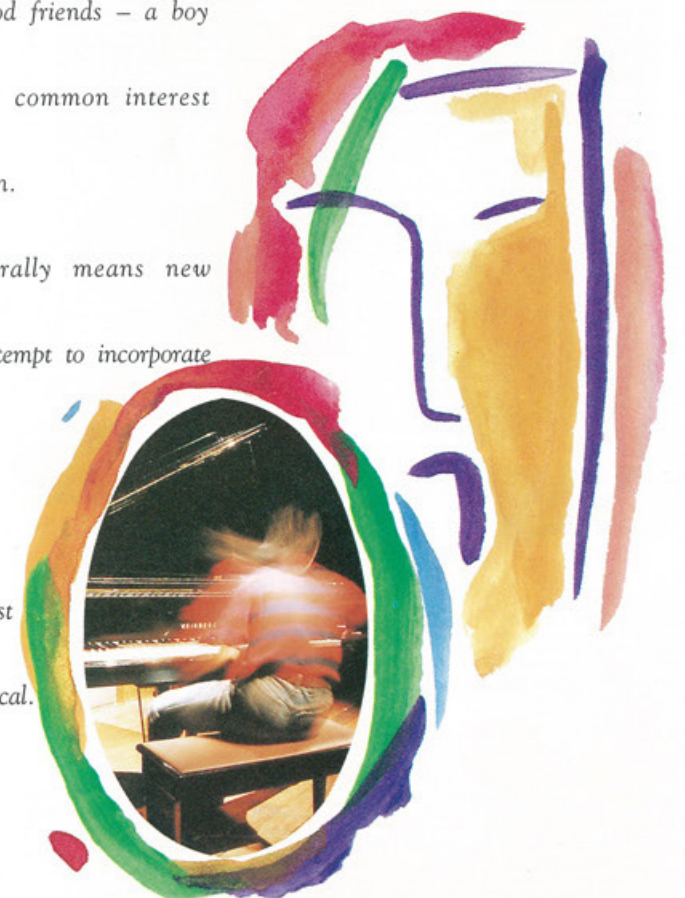
Written by 1990 Cultural Medal-  
lion recipient, Han Lao Da, *Striving  
Years*, a contemporary theatre work, is  
the contribution of the Singapore Fed-  
eration of Chinese Drama Associations  
to the Singapore Festival of Arts 92.  
With a cast drawn mainly from the  
Southern Arts Society, the Singapore  
I-Lien Dramatic Society, the Life Drama  
Society, the Chuen Lei Literature & Art  
Association and Singapore Chin Kang  
Huay Kuan Drama Group, the joint  
production features specially composed  
classical and Xin Yao music.

The play is based on real life  
experiences of some Xin Yao singers  
with the theme centering on the  
strength of friendship and its ability  
to withstand the changes in time. It



centres on two good friends – a boy  
and a girl with a common interest  
in music composition.

Xin Yao literally means new  
ballads, and this attempt to incorporate  
this genre of local  
modern folk songs  
will make it the first  
Singapore folk musical.







## A NEW MOVEMENT IN ART.

You're looking at the perfect medium sized family saloon – the 1.6 litre Nissan Presea.

It's a vehicle of outstanding beauty. Smooth natural lines. Sleek recessed headlamps. A grilleless mask. A rounded rear window. And a spacious, elegantly integrated interior.

It's supremely functional. An advanced 16 valve twin cam, electronic fuel injected engine can unleash up to 110 horsepower. To top it off, the Presea comes with an optional Anti-lock Braking System (ABS) for superior safety, and an environmentally friendly unleaded petrol capacity.

The new Nissan Presea is far more than a revolution in family saloons. It's a new movement in art. Arrange for a test drive at your nearest Nissan outlet today.

**PRESEA**  
ART DRIVE

NISSAN DISPLAY CENTRE: 911 BUKIT TIMAH ROAD SINGAPORE 2168. TEL: 4667711. OPEN DAILY MON TO SAT FROM 8AM TO 8PM AND SUN & PUBLIC HOLS FROM 9AM TO 7PM. SALES CENTRES: OPEN EVERY DAY FROM 9AM TO 5PM (SUN 10AM TO 2PM) • BEDOK BRANCH TEL: 4421881 • QUEEN STREET BRANCH TEL: 3385311. SALES OUTLETS: BEE HOCK MOTOR & CREDIT (PTE) LTD TEL: 7783688 • CEDRIC MOTOR (PTE) LTD TEL: 2988288 • FULSAN MOTORS (PTE) LTD TEL: 4689686 • HONG HENG (PTE) LTD TEL: 4521112 • KOK YOE CHUAN (PTE) LTD TEL: 2992666 • SIN HOCK SENG TRADING CO (PTE) LTD TEL: 3551879 • TAN CHONG INDUSTRIAL MACHINERY TEL: 2653666 • TAN MOTOR CAR ENTERPRISE TEL: 4577328.

TAN CHONG & SONS MOTOR CO., (S) PTE. LTD. YOU COME FIRST **NISSAN**

# Gunong Sayang Association

NASIB (FATE)  
WTC AUDITORIUM  
11 - 13 JUNE

The Gunong Sayang Association,

For the Singapore

founded in 1910

to preserve the

Peranakan heritage

has slowly evolved

through the years as

a drama organisation. In 1985, it first

staged the highly acclaimed play

"Buang Keroj Pungot Jernih", which

was followed by six other full-length

plays and numerous sketches. The

Gunong Sayang Association has also

performed successfully in Malacca

and Penang.

Festival of

Arts 92,

the

Gunong

Sayang

Association will

be performing

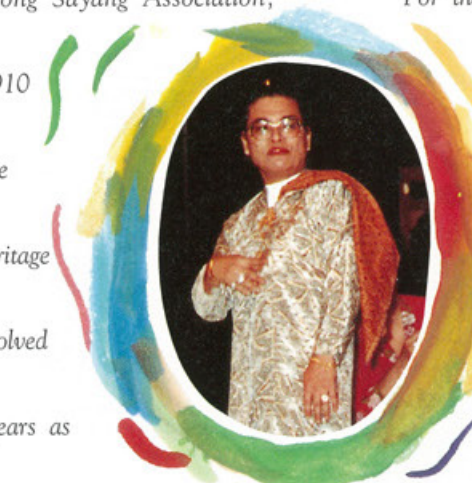
"Nasib" (Fate),

written by

their resident

playwright

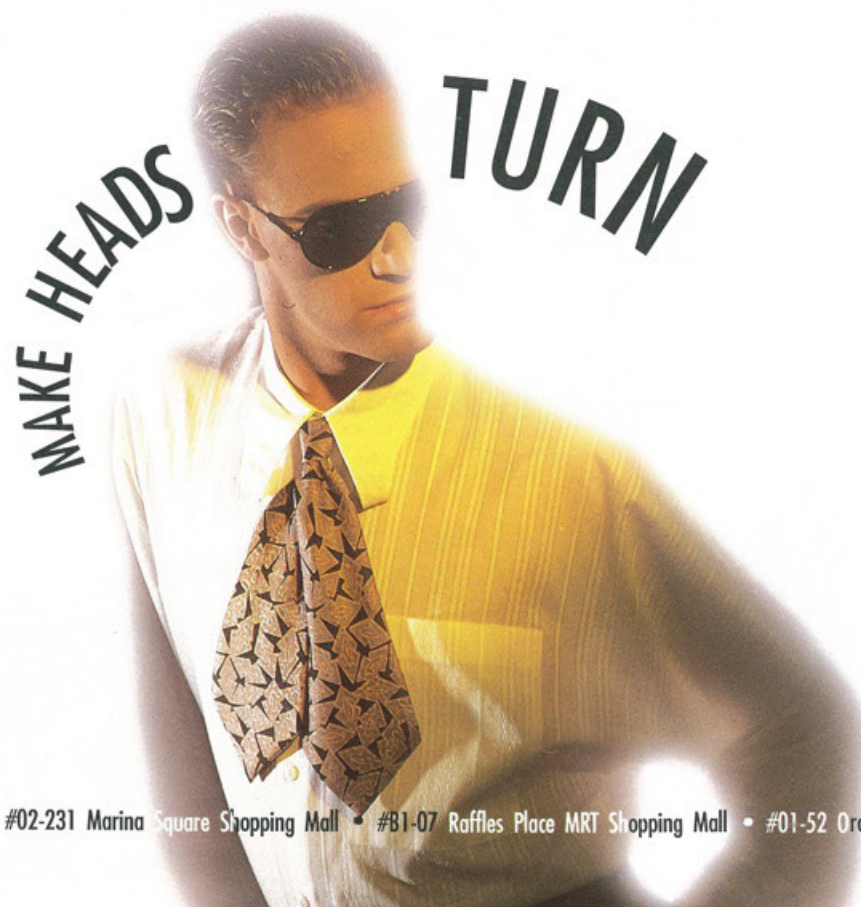
Henry Tan.



Sponsored by:  
SHELL COMPANIES IN SINGAPORE







The trendiest collection of exclusive designer eyewear in Singapore. At Jardine Optical Shop - Hong Kong's most innovative optical retailer. For preferred service from registered optometrists you can trust.

Be amongst the first 100 to drop by at any of our shops and we'll give you something to take home for free. Only from 2nd to 8th June 92.

**the optical shop**  
高登眼鏡

The Caring Professionals

#02-231 Marina Square Shopping Mall • #B1-07 Raffles Place MRT Shopping Mall • #01-52 Orchard Plaza

**10% Discount**  
Please cut out and present this coupon for your purchases.



This establishment is recognised and recommended by the Consumers' Association of Singapore and the Singapore Tourist Promotion Board.



### INVESTMENT DRESSING FROM YOUR TAILOR

Excellent workmanship, Impeccable cut and the finest imported fabrics are the hallmarks of our custom-tailoring service. Our experienced tailors also make ladies' jackets, and provide hand-stitched suits for the gentlemen who want the best.

Choose your fabric from our wide range of brands like SCABAL, DORMEUIL, ZEGNA, MARIO CAPRA, FINTEX, TEMA UOMO and others.

### Meiko Tailor 美可洋服

**Branches:** Pan Pacific Hotel, Singapore, Marina Square, 6 Raffles Boulevard #01-300, S'pore 0103. Tel: 3397597 (Direct) Fax: 3399030 Hotel Tel: 3368111 Ext 4137 • Blk 203, Hougang Street 21, #01-47, S'pore 1953. Tel: 2804889 • 390, Victoria Street #03-15, Golden Landmark, S'pore 0718. Tel: 2920477 Fax: 3399030

**Competitive Prices, (Value for money) high quality leather products and friendly service**



### We offer:-

• A wide range of shoes from Italy and Germany for ladies & gentlemen (Brand names: MARIO PUCCINI, M JOHN, GALLUS LIBERTY, MANZ, etc.) • An assortment of handbags • Other leather products

- Convenient location next to Golden Landmark Hotel
- Near to Bugis MRT station ■ Ample parking ■ No hassle

### Meiko Leather Goods

390, Victoria Street #03-56, Golden Landmark, Singapore 0718. Tel: 299 0902 Fax: 339 9030

# Majlis Pusat & Spore Malay Drama Groups

A DOG FOR A DIPLOMAT  
WTC AUDITORIUM  
15 - 16 JUNE



Anjing Untuk Diplomat (A Dog

For A Diplomat) is a joint production by seven Malay Drama groups under the coordination of Majlis Pusat, the Central Council of Malay Cultural Organizations. Directed by Sabri Buang, Anjing Untuk Diplomat will involve some of Singapore's veteran and up-

and-coming talent from various Malay cultural and drama groups Anjing

Untuk Diplomat

is a production conceived specially for the Singapore

Festival of Arts 92. The play, written by Hamid Ismail, centres on a political intrigue spiced with underworld in-



stitute, Sonja, who poses as Pierre's wife, for a mission in South-east Asia. Their plan goes awry resulting in tragic consequences.

French Government has assigned undercover agents, Pierre and a pro-





*Together We bring you the Best!*

#### PENINSULA HOTEL

315 rooms with modern facilities

Coleman's:  
24-hr Coffee House  
Coleman's Lounge:  
Karaoke

Golden Million:  
Nite Club

Crystal Rooms:  
Function Rooms

Secretarial Counter  
Swimming Pool  
Shopping Arcade



#### EXCELSIOR HOTEL

300 rooms with modern facilities

Cafe Excelsior  
Hillside Lounge  
Silver Room / Orchid Room:  
Function Rooms

Shanghai Palace:  
Chinese Restaurant

Teppan-yaki Nagumo:  
Japanese Restaurant

Annalakshmi: Indian  
Vegetarian Restaurant

Secretarial Counter  
Swimming Pool &  
Health Centre

Shopping Arcade

半島 SINGAPORE  
**Peninsula Hotel**

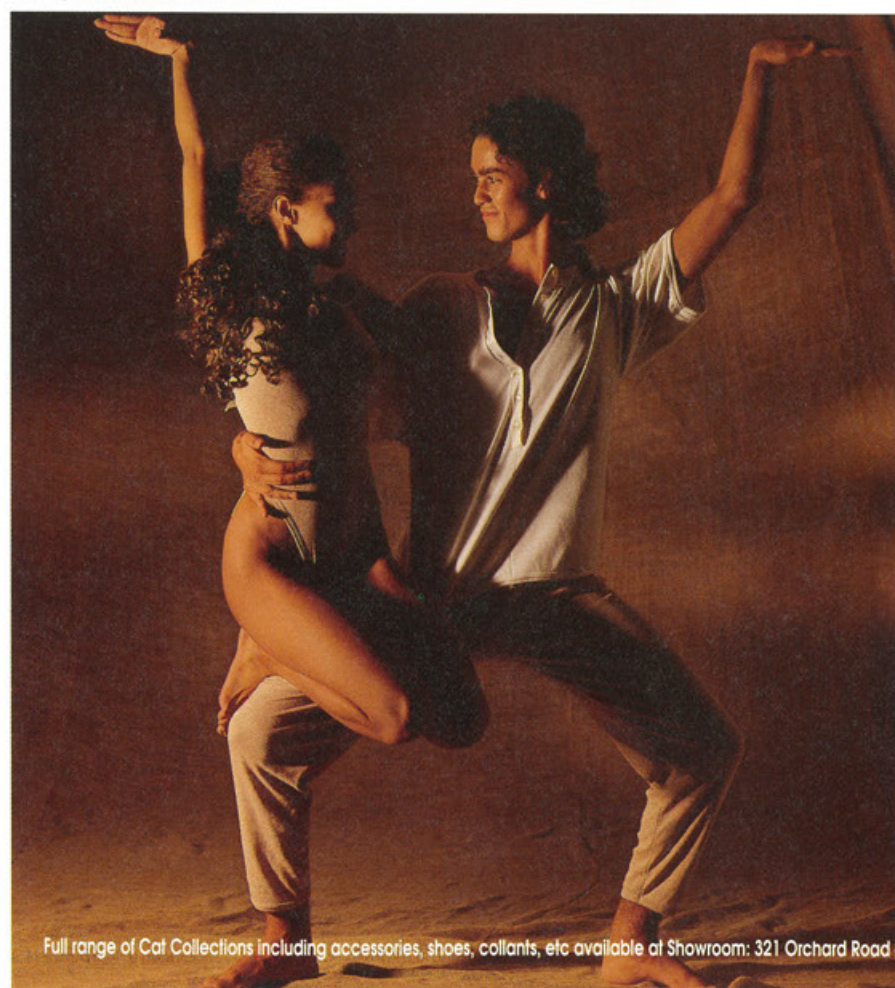
3 Coleman Street, Singapore 0617  
Tel: 337-2200. Fax: (65) 339-3580



三三 SINGAPORE  
**Excelsior Hotel** 怡東

5 Coleman Street, Singapore 0617  
Tel: 338-7733. Fax: (65) 339-3847

Reservation Hotline Tel: 338-6164



**cat**  
Made in Italy

DANCEWEAR  
&  
ACTIVEWEAR

FOUR DECADES EXHIBITION

Singapore International Festival of Arts 2018  
SPRING/SUMMER '92  
COLLECTION

Apparel Collections available at Tangs Studio - Studio Way  
Full range of Cat Collections including accessories, shoes, collants, etc available at Showroom: 321 Orchard Road #05-05 Orchard Shopping Centre Singapore 0923. Tel: 7372100

# Pan Asian Repertory Theatre

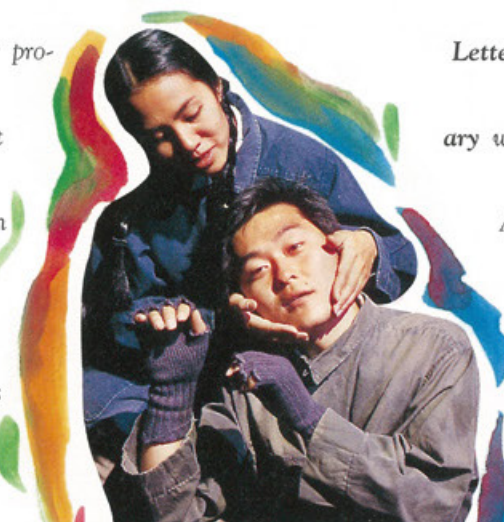
WTC AUDITORIUM  
21 - 24 JUNE



Opportunities for Asian actors in America are rather limited, and it is due to this reason that Tisa Chang set up the Pan Asian Repertory Theatre in 1977. As a platform for artistic expression, the theatre has attracted talents like David Huang, an Obie winning playwright, who has written highly acclaimed plays like *M. Butterfly* and *FOB*.

In its 14 seasons, Pan Asian Repertory Theatre has staged 46 full productions, 18 world premieres and 7 American premieres.

This theatre group is highly respected in the New York theatre circle for its innovative productions of Asian plays like Lao She's "Tea-house" and Sam Shikaze's detective trilogy featuring "Yellow River", and adaptations of western classics like *A Midsummer Night's Dream* and *Shogun Macbeth*. The former production, set in the Chin Dynasty, drew kudos



for originality; while the latter, set in samurai Japan, was described by critics as a "Kurosawa film on stage" and "a dynamic variation of the original".

Through their productions of Asian-American plays, Pan Asian Repertory has created a distinct Asian-American theatre and have garnered themselves many prestigious awards. Their mission is to draw upon the unique heritage of Asian-Americans by utilizing the style, music and movement of various Asian performing arts traditions in order to explore new theatrical forms.

*Letters to a Student Revolutionary* will be the play that the Pan Asian Repertory Theatre will present at this year's Singapore Festival of Arts.



FESTIVAL HOTELS

Concorde Hotel

Apollo Hotel

Hotel Grand Central

Hotel Royal



FESTIVAL SUPPORTERS

Public Utilities Board

Festival Market Telok Ayer

Singapore Telecom

American Express  
Travel Related Services

Diners Club International

The Hongkong and Shanghai  
Banking Corporation

PROGRAMME COMMITTEE

Chairman  
Mr Robert Lau

Members  
Mr Robert Yeo

Mdm Goh Soo Khim

Brother Joseph McNally

Mr Lee Sow Lim

Prof Edwin Thumboo

Assoc Prof Bernard Tan

Secretary  
Mr Liew Chin Choy

FOUR DECADES OF  
Singapore International Festival of Arts







"LORD OF THE RINGS" PERFORMED BY THEATRE SANS FIL WITH MAGICAL REALISM.

## "All art is quite useless."

(OSCAR WILDE)

So said this literary figure known for his artful wit.  
We beg to differ.

At PSA, we believe that the arts can help weave  
our many colourful cultural threads into a single, rich  
social fabric.

This year, we bring to you Theatre Sans Fil,  
performing Tolkien's "Lord Of The Rings". A magical  
play with a fantasy story-line and bewitching  
effects to enthrall adults and children. Our support  
is but a small investment. For the  
sake of our future generations.



PORT OF SINGAPORE AUTHORITY

# Theatre Sans Fil

WORLD TRADE CENTRE  
HARBOUR PAVILION  
18 - 21 JUNE

an auditorium enveloped in quadropho-  
nic sound, is only the beginning of  
this other-worldly experience.

The subject matter is also nothing  
less than the exhilarating  
imaginative world of J.R.R.

Tolkien's Middle Earth

as described in his "Lord of the  
Rings". Tolkien's trilogy is a magnifi-

cent saga of good versus evil, which  
does not lend itself easily to adaptation

on stage. Yet this is what Theatre  
Sans Fil manages to do admirably well.

With the huge puppets, elaborate  
costumes and special sound effects

to simulate the forests of Middle  
Earth, Theatre Sans Fil's version of

the "Lord of the Rings" is truly an  
experience for the senses.

Sponsored by:  
PORT OF SINGAPORE AUTHORITY



In 1971, Andre Viens conceived

of an innovative, daring art

form which would break

the boundaries of conven-

tional theatre and Theatre Sans Fil

(Theatre Without String) was born.

As its name suggests, the audience

is not to expect anything

boring and conventional.

The result is pure fantasy—a

stage peopled by giant puppets,

lighted by laser technology and



FOUR DECADES EXHIBITION

Singapore International Festival of Arts



BELIEVE IT OR NOT, THIS PICTURE OF PARADISE  
WAS PAINTED BY NUMBERS.



THE ORIENTAL  
SINGAPORE SM

In recent surveys, readers of Executive Travel and Business Traveller collectively bestowed a number of awards upon The Oriental Singapore. However, before we list these awards, we'd like to thank the common denominator behind them: our staff. Each member's commitment to providing the finest service is reflected in accolades they have won; accolades such as Singapore's best waiter, and Singapore's best barman. In addition, they also ensure that our obsessive attention to detail is fulfilled. From our beautifully presented Crabtree and Evelyn toiletries to our impeccably maintained Jaguars and Mercedes.

Naturally, they were also responsible for our being named one of the world's top ten hotels by Business Traveller. And for our award in Executive Travel's Best International Hotel category, where we took second place to, you guessed it, our sister hotel in Hong Kong. And part and parcel of our International Hotel with the Best Restaurant award, which was won by Fourchettes Restaurant. A plethora of awards indeed. All of which add up to the fact that The Oriental Singapore truly is greater than the sum of its parts.

# Theatre Fantastique

WTC AUDITORIUM  
6-8 JUNE



A visual spectacle of the first order, Theatre Fantastique has established a reputation for employing the

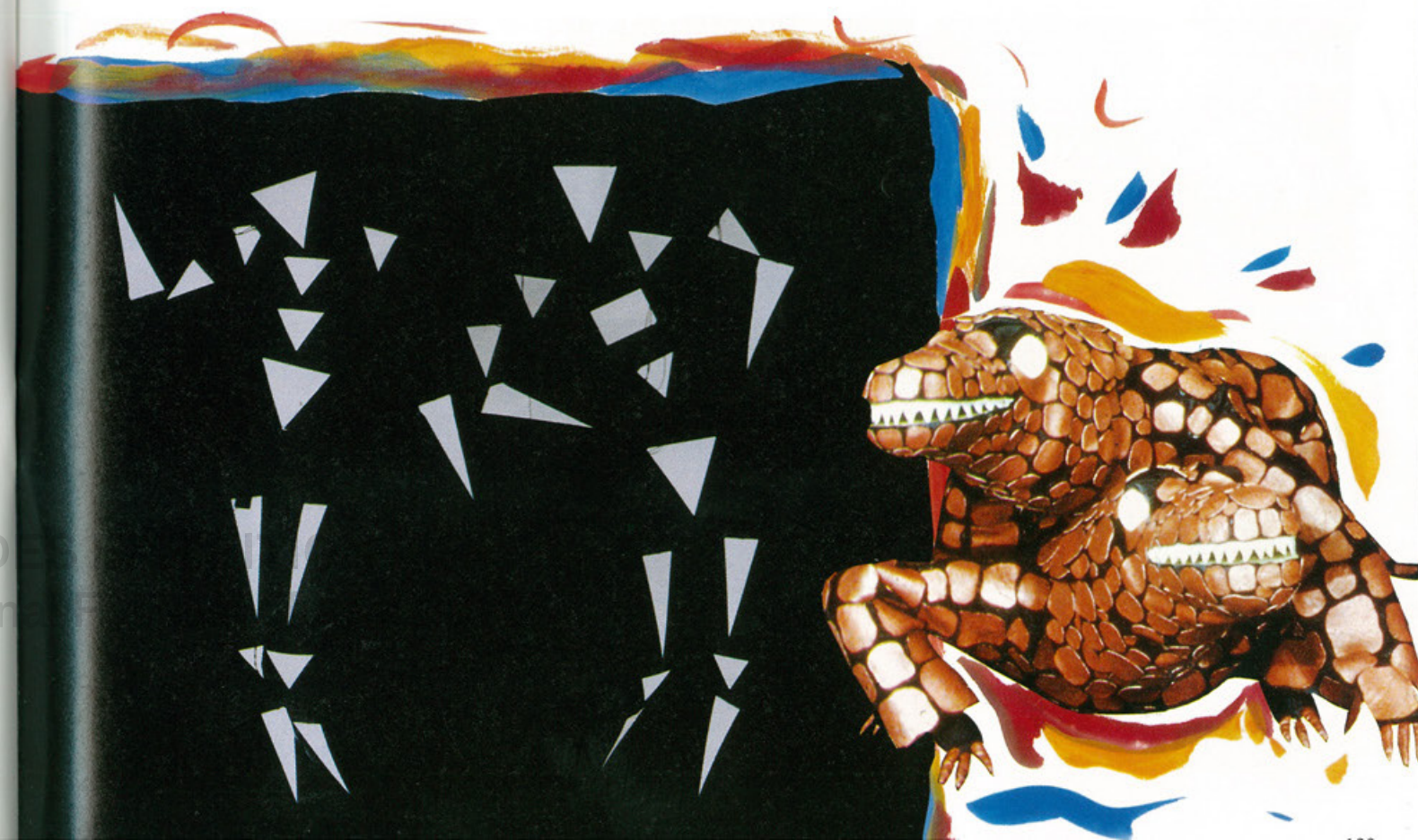
newest and most sophisticated technology as well as for using masques, puppets and mime to dazzle the eye.

Founded by Richard Zachary, and based in Paris, the three-man group has performed extensively throughout Europe. It has been described as "an utterly baffling but hypnotic spectacle".

It is a mime group in the tradition of the great French mime artist Marcel

Marceau but it also uses music and special effects to enhance an already stunning performance, by suffusing it with an almost ethereal quality.

Refusing to be categorised or pigeonholed, Theatre Fantastique, in true postmodernist fashion, borrows from diverse sources, coming up with an art form which is unique as well as exhilarating.





# Pause for a while...

... when deciding to decorate your home. Interiors, well known for our designer furnishing fabrics, is one of Singapore's largest stockist with over 2000 designs in stock, at any one time. We have made an impression with our design concept and have gained a good reputation for our quality service. Our ideas can be experienced in our showrooms at the Promenade, Shaw Centre, Henderson and also at Plaza Atrium, Kuala Lumpur. We offer you a wide range of upholstered furniture and decorative accessories for your home. Visit any of our showrooms today and look ...



## ... for interiors



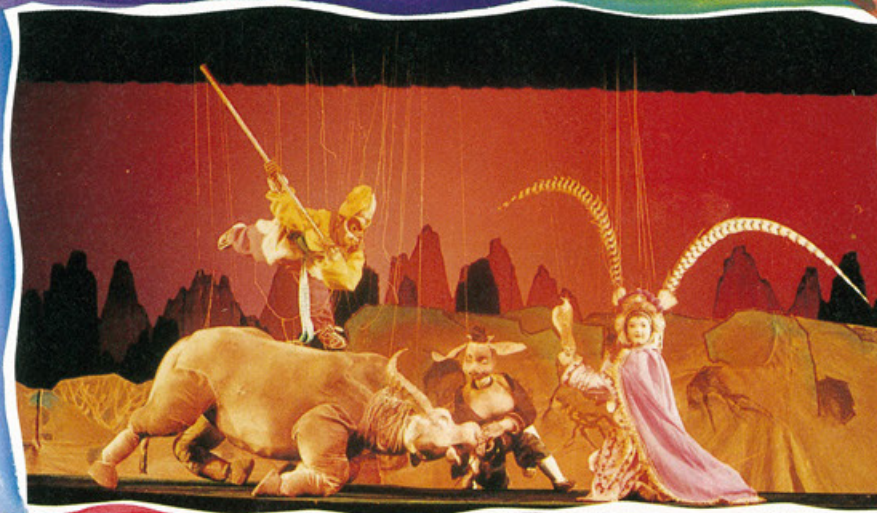
**Interiors Pte Ltd**  
The Promenade  
300 Orchard Road #03-14/15/16, The Promenade,  
Singapore 0923. Tel: 7344516 (6 Lines) Fax: 2359425  
Open from: 10am — 6pm (Mon — Sat)

**Interiors Showplace Pte Ltd**  
Shaw Centre  
1, Scotts Road, Shaw Centre, #04-38/44,  
Singapore 0922. Tel: 2353621 Fax: 2359748  
Open from: 10am — 6pm (Mon — Sat)  
**Henderson**  
211 Henderson Road Level 1: 04/05, Level 2: #02-04  
Henderson Industrial Park, (Opp. HDB Centre)  
Singapore 0315. Tel: 2701355, 2741355 Fax: 2733466  
Open from: 10am — 6pm (Mon — Sat)  
11am — 5pm (Sun & Public Holiday)

**Interior Plus Sdn Bhd**  
Plaza Atrium  
G1-G8 Ground Floor, Plaza Atrium,  
Lorong P. Ramlee, Kuala Lumpur 50250 Malaysia.  
Tel: 03-2320886 Fax: 03-2320890  
Open from: 10am — 6pm (Mon — Sat)

# Quanzhou Puppet Troupe

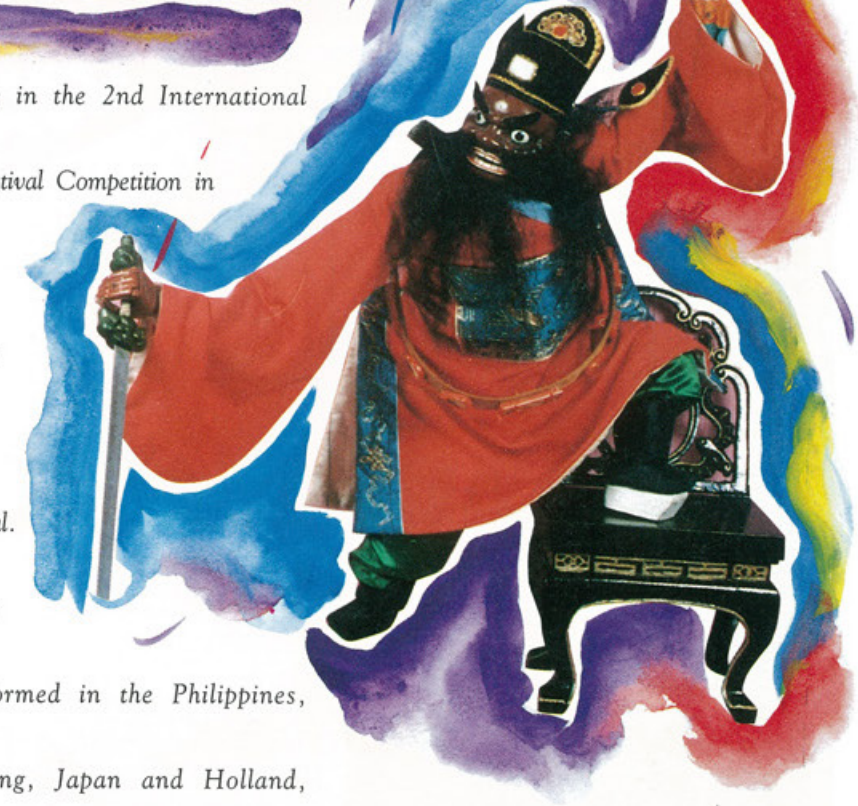
SINGAPORE CONFERENCE HALL  
5 - 9 JUNE



The 28-member Quanzhou Puppet Troupe hails from Fujian province, China. It was established in 1952 with the aim of promoting and improving the art of traditional Chinese puppetry. Since its inception, the troupe has improved the construction and appearance of the puppets, the stage requirements as well as the dramatic techniques.

The Quanzhou Puppet Troupe has also performed extensively in China and abroad. In 1960, they were invited to

participate in the 2nd International Puppet Festival Competition in Romania where they won the silver medal. They have also performed in the Philippines, Hong Kong, Japan and Holland, winning themselves impressive reviews with their repertoire comprising both traditional and modern stories.



Sponsored by:  
SINGAPORE HOKKIEN HUAY KUAN AND  
SIX CLAN ASSOCIATIONS OF QUANZHOU



CHOMEL

CENTREPOINT

MARINA SQUARE

IOUB CENTRE

PARAGON

RAFFLES CITY

SCOTTS

WISMA ATRIA



# Omer Veilleux

DBS AUDITORIUM  
9 - 12 JUNE



Omer Veilleux is actually a persona created by Canadian Yves Dagenais in 1983. Since then Veilleux (Dagenais) has starred in more than 500 performances in Canada, Holland, Martinique, Japan, Brazil and others.

Dagenais derives inspiration from the foibles of human nature - "As long

as there will be human silliness, I will not run short of ideas!"

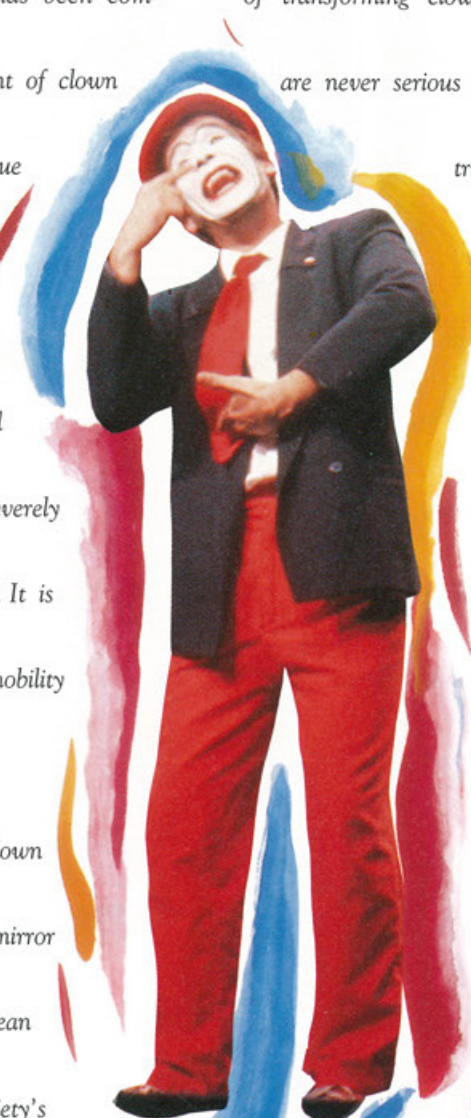


Since 1983, Omer Veilleux Productions Incorporated has been committed to the development of clown art and the new burlesque theatre. According to Dagenais, "The art of clowning has deteriorated

to mere comic function, severely restricting its possibilities. It is about time the rightful nobility of the craft is restored."

Dagenais sees the clown as a kind of deformed mirror of society, a Shakespearean fool coldly reflecting society's weaknesses. His one-man adult clown show is a mime show with a difference. He believes very firmly in engaging his audience by toying with them and incorporating them into his act.

Even though he has serious aims of transforming clown art, his shows are never serious or high brow, but true to the tradition of clowning, entertaining from start to finish.



FOUR DECADES EXHIBITION  
Singapore International Festival of Arts 1993



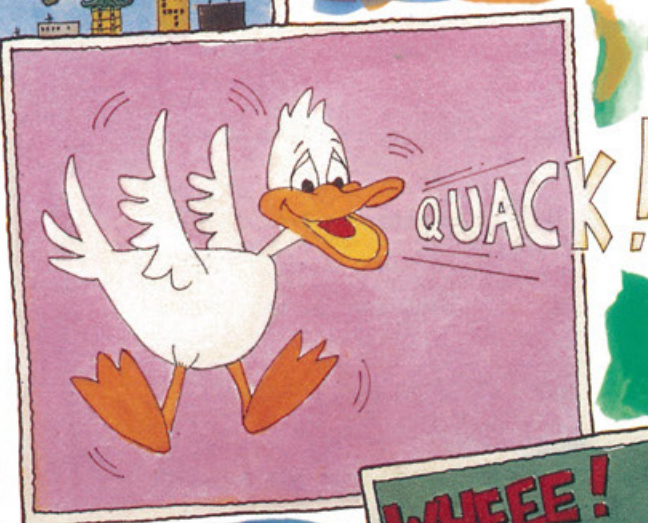
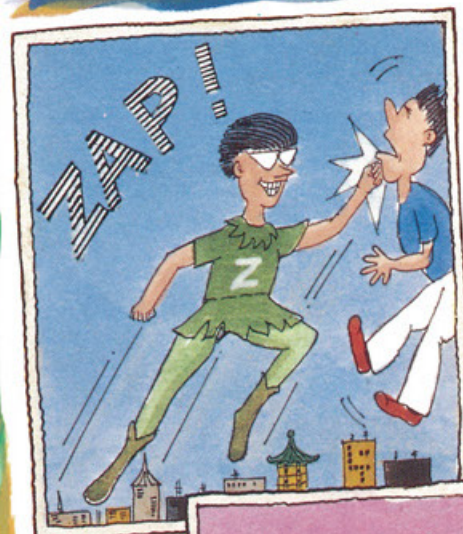
# Hi! Theatre

ZAP! QUACK! WHEE!  
 DRAMA CENTRE  
 13 - 15 JUNE

Hi! Theatre is Singapore's highly successful theatre of the deaf and uses hearing-impaired and hearing actors, all of whom are Singaporeans. Hi! Theatre exists to further the interests of the hearing-impaired performers and to give the disabled a voice of their own.

Apart from performing in Singapore, Hi! Theatre has also performed internationally – in Belgium, the Deaf Way Festival in Washington D.C., the Asian Folktale Carnival in Tokyo and also the Deaf Awareness Week in Kuala Lumpur.

At the Singapore Festival of Arts



feature superheroes, villains and other comic book characters. The audience can expect to see, among other things, a duel in the kitchen between warring utensils and a hawker centre at the zoo (where the diners are distinctively carnivorous).

Accompanied by

92, Hi! Theatre will

be performing "ZAP!

QUACK! WHEE!"

in a celebration of theatri-

cal cartoonery. Using a variety of

theatrical techniques including mime,

masks and animated objects, the stories

Soundtrax, a band specialising

in kazoo, swanee whistle and offbeat

voice effects, "ZAP! QUACK! WHEE!"

is targetted at a family audience.



FOUR DECADES EXHIBITION  
 Singapore International Festival of Arts 2018



# Asean Artists

NATIONAL MUSEUM ART GALLERY  
5 - 25 JUNE



Otosos No 1, 1987 (Teo Eng Seng)

The visual arts programme features an exhibition of the recent works of 14 outstanding ASEAN artists, with the aim of providing a glimpse of the development and progress of the visual art in ASEAN.

With a collection of 84 paintings, the exhibition will also show the diversity of styles and media found in the ASEAN art scene. The artists taking part in the exhibition are:-

Brunei Darussalam Hj Marsidi Bin Hj Akip  
Abdul Malek Hj Metarsat

Indonesia Dr A D Pirous  
Dr Srihadi Soedarsono

Malaysia Yeoh Jin Leng  
Fauzan Omar

Philippines Jose T Joya  
Cesar F Legaspi

Singapore Tan Swie Hian  
Jaafar BA Latiff  
Thomas Yeo  
Teo Eng Seng

Thailand Ithipol Thangchalok  
Thavorn Ko-Udomvit

This art exhibition is presented by Sun Craft Fine Art Gallery in cooperation with the Singapore Festival of Arts and National Museum.



Night Kites, 1988 (Tan Swie Hian)



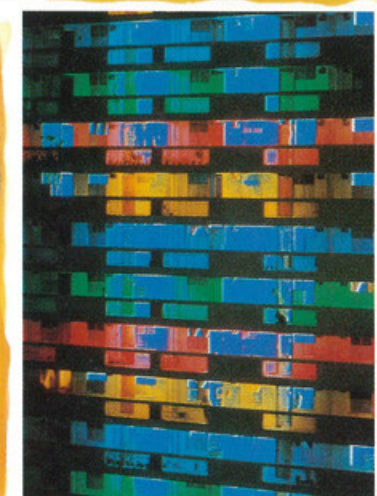
Self Portrait IB 191, 1991 (Jaafar Latiff)



Flick on Flack, 1989 (Thomas Yeo)

# Asean Photographers

NATIONAL MUSEUM ART GALLERY  
5 - 25 JUNE



The works of 17 outstanding ASEAN photographers will be featured in the Distinguished Photographers of ASEAN Exhibition. Individually and collectively, the exhibition will reveal how the photographers of ASEAN have experimented and developed their art to new heights of artistic and technical excellence.

The exhibition displays some 47 photographs by the following outstanding

ASEAN photographers:-

Brunei Darussalam Liew Kok Peng

Indonesia A Riaman  
Santoso Alimin

Malaysia K F Wong  
Ng Chee Kong

Philippines T Angsin

Singapore David Tay Poey Cher  
Ang Chwee Chai  
Tan Lip Seng  
Chua Soo Bin  
Foo Tee Jun  
Peng Seng Wu  
Lee Sow Lim  
Tong Koon Hung

Thailand P Sil-Ngam Lert  
Chavana Chamornan

This exhibition is jointly presented by the photography societies of Singapore in cooperation with the Singapore Festival of Arts and National Museum.

Sponsored by  
TITHES MARKETING (S) PTE LTD

TITHES 十全





# CORPORATE SERVICE PROGRAMME

## For the Discerning Business Traveller

The Corporate Service Programme is a symbol of distinction with an assurance of recognition and an unsurpassed level of service. You will enjoy the sense of arrival matched only by an anticipation of what is to come.



Deluxe Room



Breakfast in Imperial Suite



Business Centre



Express Check-in

- ☐ Meeting service at the airport ☐ Express check-in with registration in the room
- ☐ Welcome drink ☐ Fruit basket ☐ Daily complimentary breakfast ☐ Daily complimentary pre-dinner drinks
- ☐ A Business Centre with a comprehensive range of services and facilities ☐ Daily newspaper ☐ Late check-out at 4.00pm ☐ Express check-out

**Executive Deluxe Room**  
S\$150.00++ (single)  
S\$170.00++ (double)

++ denotes 10% service charge and government tax as applicable

For room reservations, kindly call 737 1666 ext 1008.

**HOTEL**  
**Imperial**  
**SINGAPORE**  
The Advantage of Experience.

1, Jalan Rumbia, Singapore 0923. Tel: 7371666.  
Telex: RS 21654 IMPHTL Fax: (065) 7374761  
Owned & Managed by Hind Hotels International Ltd.

*She worked from  
nine to five. She tried for*



*beauty queen but lost. Now  
she's a queen on the screen.*

After all, who says everything has to remain the same?



Breaking with tradition has always been a French heritage.

Every Carven watch carries a unique hologram label as your guarantee of Swiss-made quality and original Carven design.  
Carven Watch is the Official Timepiece for the Miss Singapore ~ Universe 1991 & Miss Malaysia ~ Universe 1991 Pageants.

Exclusively available at authorised Carven Watch Dealers.  
Sole Agent & Service Centre: MONTRES CARVEN INTERNATIONAL PTE LTD.  
(Member of the Leong Poh Kee Group) 289 Beach Road, 01-02, Singapore 0719. Tel: 292 5155. Fax: 292 2881.

**carven**  
paris

FOUR DECADES EXHIBITION  
Singapore International Festival of Arts 2018



This artefact was digitised by Centre 42's The Repository for the

## Four Decades Exhibition

presented by Singapore International Festival of Arts 2018.

The Repository is a growing digital archive of Singapore theatre ephemera dating back to the 1960s. Managed by Centre 42, it is a resource for artists, researchers and the public, looking to find out more about Singapore theatre history. The archive can be viewed at [repository.centre42.sg](http://repository.centre42.sg).

Centre 42 is a theatre development space committed to the creation, documentation and promotion of texts and writings for the Singapore stage. Find out more at [centre42.sg](http://centre42.sg).

If you would like to contribute programmes, brochures or posters from past productions in Singapore theatre to the Repository, please write to [info@centre42.sg](mailto:info@centre42.sg).



Festival guides for the Four Decades exhibition were sourced from:

Arts House Limited

National Arts Council Singapore

The personal collection of Ms Goh Ching Lee (Festival Director 2000-2009)